



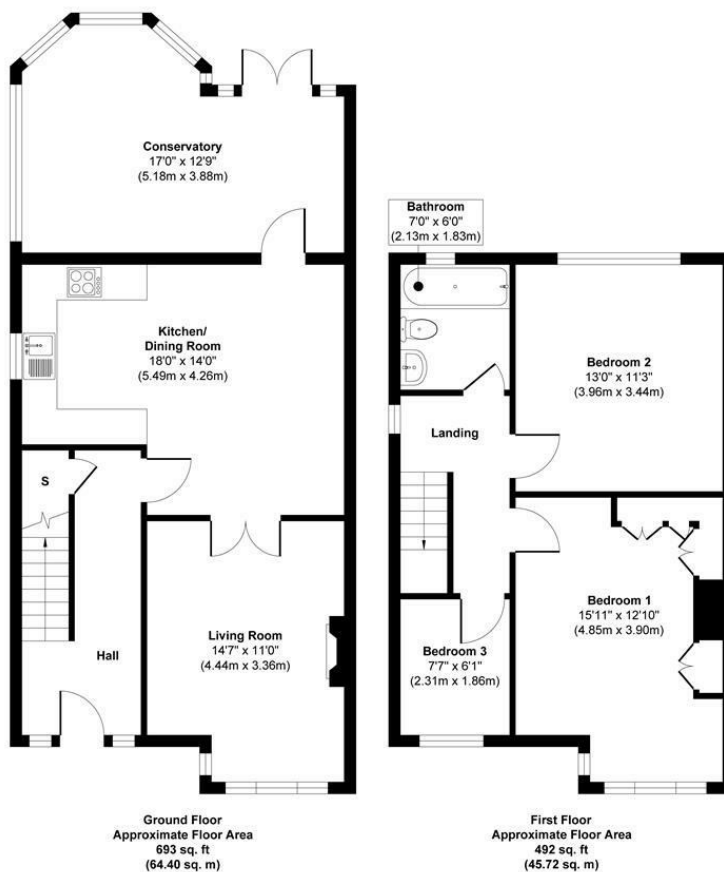
**3 Bed  
House - Semi-  
Detached  
located  
in Barnburgh**

Offers over £260,000



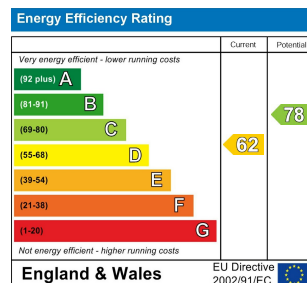
**BURROWS**  
*Residential*





**Approx. Gross Internal Floor Area 1185 sq. ft / 110.12 sq. m**

Illustration for identification purposes only, measurements are approximate, not to scale.  
Produced by Elements Property



## DIRECTIONS

## CONTACT

Century 2 Business Centre Dearne Lane  
Manvers  
Rotherham  
S63 5DP

E: [info@burrowsresidential.co.uk](mailto:info@burrowsresidential.co.uk)  
T: 07507 905644

