



Neo Bankside, Holland Street , London SE1

FORTIS





# Neo Bankside , London SE1

---

## Fortis Residential

48 Warwick Street, London  
W1B 5AW

tel. : **07966 700 484**

email: **dk@fortisresi.com**

This luxurious 280 sq.m.(3,014 sq.ft) lateral apartment, meticulously renovated to the highest standards, offers **4 spacious bedrooms, 4 bathrooms**, an additional office/guest room, a large walk-in wardrobe, and breathtaking panoramic views. Situated within the iconic Neo Bankside, designed by the Rogers Stirk Harbour + Partners, residents enjoy exceptional amenities, including 24-hour concierge and security, a private leisure club, a residents' gym, secure underground parking, dedicated storage, a business centre, and beautifully landscaped private gardens.

Located next to Tate Modern and South Bank, this prime location is close to Borough Market, Royal Festival Hall, and the London Eye. With excellent transport links, including three underground stations, two railway stations, bus routes, and the river bus at Blackfriars Pier, the City is just a 15-minute walk away.

---

**Guide price:** PAO

**Tenure: Leasehold:** approximately 991 years

**Service charge:** approximately £35,000 per annum

**Ground rent:** £1600 per annum

**Local authority:** London Borough of Southwark

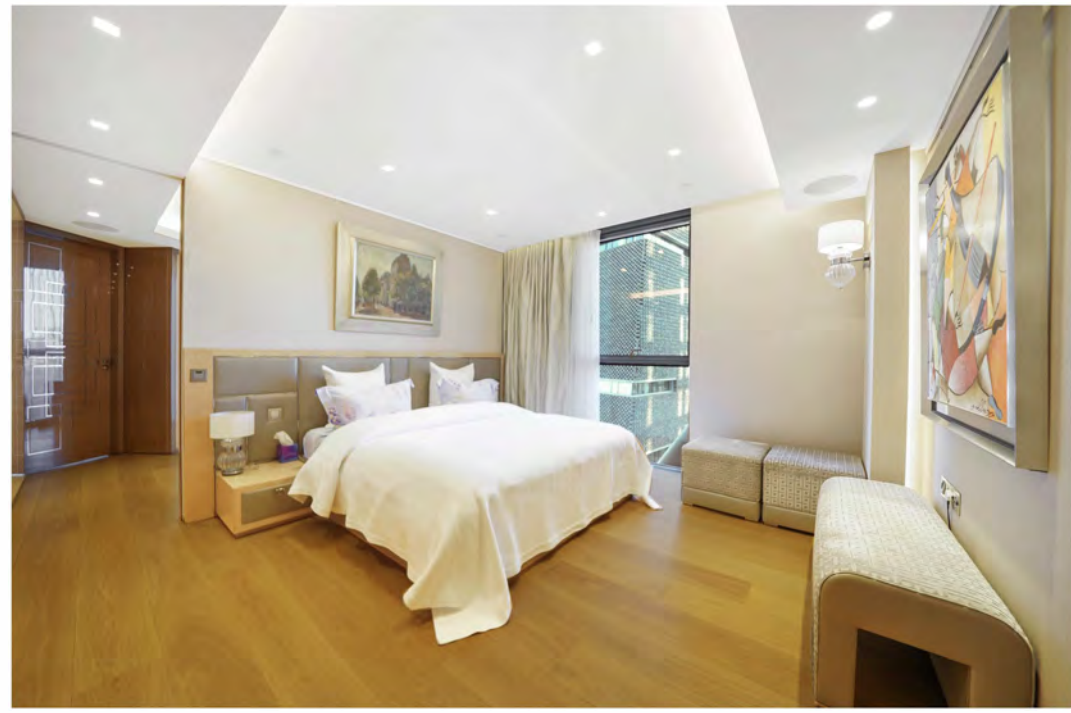
**Council tax band:** H















**Neo Bankside, SE1 9JF**  
Total Area approx. 280 Sq m. / 3,014 sq ft.

**Fortis Residential**

48 Warwick Street  
London  
W1B 5AW

Dennis Klimchuk

tel.: **07966 700 484**

email: **dk@fortisresi.com**

