

FREEHOLD



House - Mid Terrace

# FINDON STREET, SHEFFIELD, S6

Guide price

## £240,000

### FEATURES

- Three-bedroom bay-fronted mid-terrace
- Elevated position with sweeping Hillsborough views
- Sun-soaked garden deck, perfect for relaxing or entertaining
- Characterful interiors with a bold, artistic flair



  
**HIGHGATES**  
SALES & LETTINGS

# 3 Bedroom House - Mid Terrace located in Sheffield

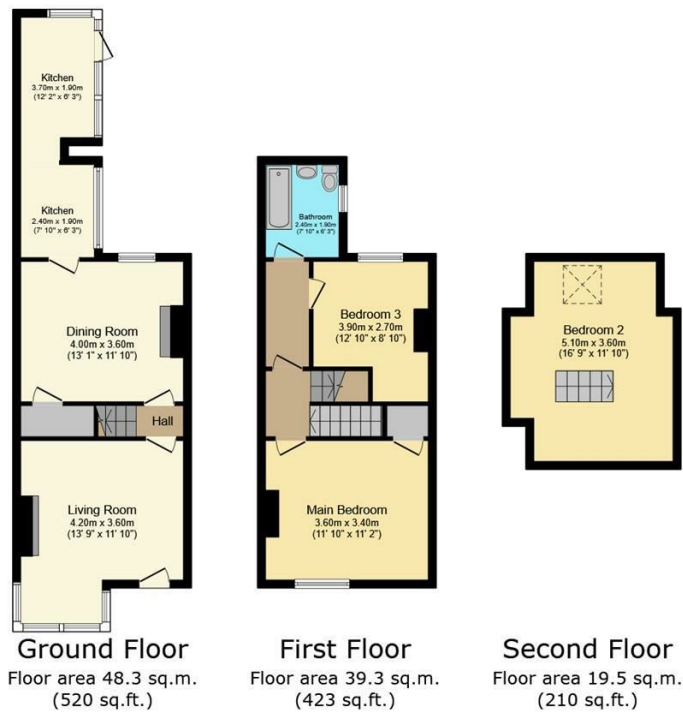
GUIDE PRICE £240,000 - £250,000

A Stylish Three Bedroom Home with Garden Deck

Perched high above Hillsborough on Findon Street, this bay-fronted three-bedroom mid-terrace offers the perfect balance of city convenience and suburban tranquility.

Just minutes from the SuperTram, regular bus services, and the vibrant heart of Hillsborough, this location puts everything at your fingertips. From independent shops, dining spots, and supermarkets to the leafy expanse of Hillsborough Park, this is a home that truly offers it all.

Inside, the house showcases a warm, artistic aesthetic paired with tasteful modern décor from its thoughtful refurbishment. The light-filled bay-windowed living room creates a bright, welcoming space, while the stylish dining room sits at the heart of the home. To the rear, a long, elegant kitchen opens directly to the garden deck, a private retreat ideal for relaxing in the sun or hosting friends.



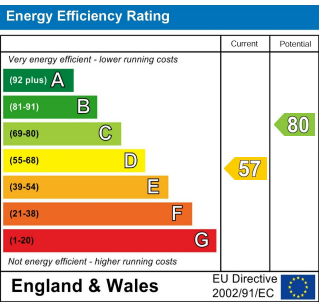
Total floor area: 107.2 sq.m. (1,154 sq.ft.)

This floor plan is for illustrative purposes only. It is not drawn to scale. Any measurements, floor areas (including any total floor area), openings and orientations are approximate. No details are guaranteed, they cannot be relied upon for any purpose and do not form any part of any agreement. No liability is taken for any error, omission or misstatement. A party must rely upon its own inspection(s). Powered by [www.Propertybox.io](http://www.Propertybox.io)

Call us on  
**0114 312 4994**

[info@highgatesestates.co.uk](mailto:info@highgatesestates.co.uk)  
[www.highgatesestates.co.uk](http://www.highgatesestates.co.uk)

**Council Tax Band**  
**A**



Agents Note: Whilst every care has been taken to prepare these particulars, they are for guidance purposes only. All measurements are approximate and are for general guidance purposes only and whilst every care has been taken to ensure their accuracy, they should not be relied upon and potential buyers are advised to recheck the measurements.

