

FREEHOLD



House - Semi-Detached

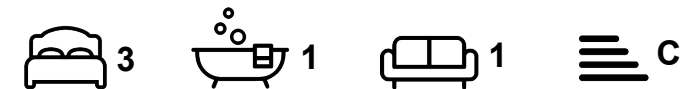
# ARGYLE CLOSE, SHEFFIELD, S8

Asking price

**£300,000**

## FEATURES

- Fully refurbished throughout to the highest standard, creating a stylish and contemporary home
- Bright and spacious bay-windowed living room filled with natural light
- Stunning open-plan dining kitchen with sleek fittings and direct garden access
- Three generously sized bedrooms and a modern family bathroom with high-quality finishes



**HIGHGATES**  
SALES & LETTINGS

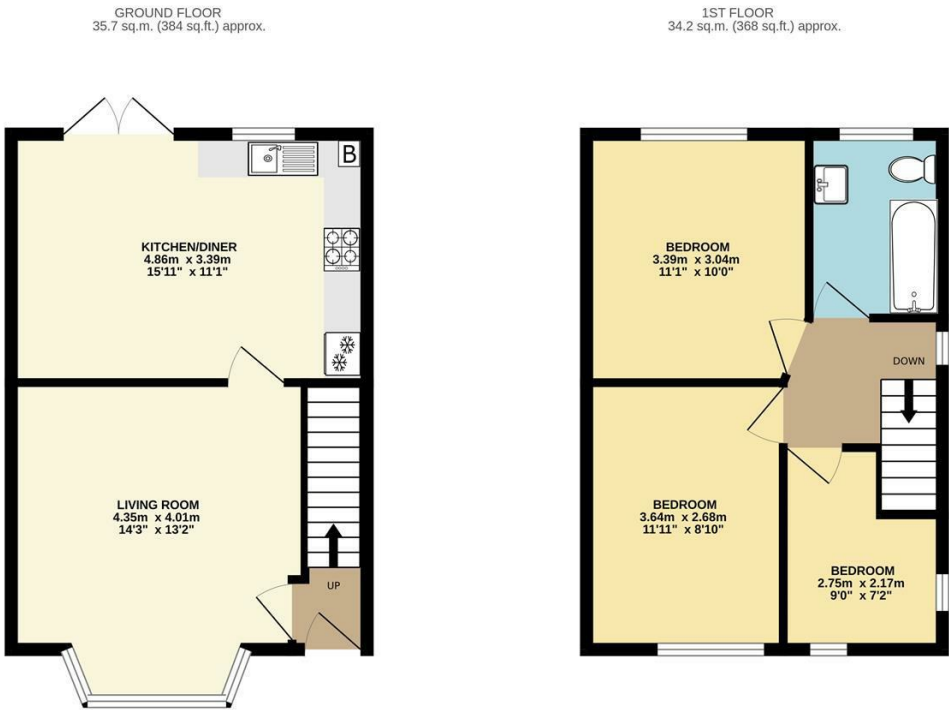
# 3 Bedroom House - Semi-Detached located in Sheffield

A Stunning Fully Renovated Three-Bedroom Semi-Detached Home in the Heart of Meersbrook

This beautifully refurbished three-bedroom semi-detached home offers a rare opportunity to step straight into a property finished to the very highest standard. Taken back to brick and thoughtfully reimagedn throughout, the result is a brand new home, with every detail carefully considered to combine contemporary style with everyday comfort. The refurbishment includes a brand new roof, full re-wire, and brand new central heating system throughout, ensuring complete peace of mind for years to come.

The ground floor features a bright and spacious bay-windowed living room, a welcoming space full of natural light. To the rear, a striking open-plan dining kitchen has been designed for both entertaining and modern family life, complete with sleek fittings and direct access to the garden.

Upstairs, three generously proportioned bedrooms are beautifully presented, complemented by a stylish family bathroom finished with high-quality fixtures. To the rear, a west-facing enclosed garden provides an excellent degree of privacy and is the perfect place to unwind or entertain in the sunshine.

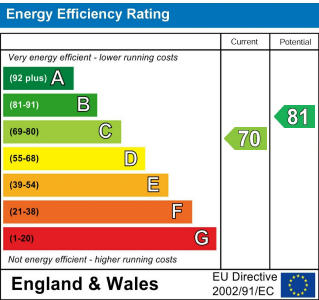


TOTAL FLOOR AREA : 69.9 sq.m. (752 sq.ft.) approx.  
Measurements are approximate. Not to scale. Illustrative purposes only  
Made with Metropix ©2025



Call us on  
**0114 312 4994**  
  
**info@highgatesestates.co.uk**  
**www.highgatesestates.co.uk**

**Council Tax Band**  
**B**



Agents Note: Whilst every care has been taken to prepare these particulars, they are for guidance purposes only. All measurements are approximate and are for general guidance purposes only and whilst every care has been taken to ensure their accuracy, they should not be relied upon and potential buyers are advised to recheck the measurements.

