

FREEHOLD



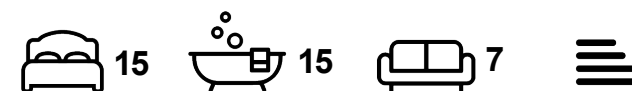
House - Detached

MOELFRE, LL72

£695,000

FEATURES

- Prime location: Just a short walk from the charming village of Moelfre and the Anglesey Coastal Path.
- Spacious accommodation: 11 en-suite bedrooms, each with stunning sea or countryside views.
- Versatile property: Former farmhouse and hotel with panoramic countryside and sea vistas.
- Planning permission granted: Former lodge and restaurant approved for six holiday apartments.




HIGHGATES
SALES & LETTINGS

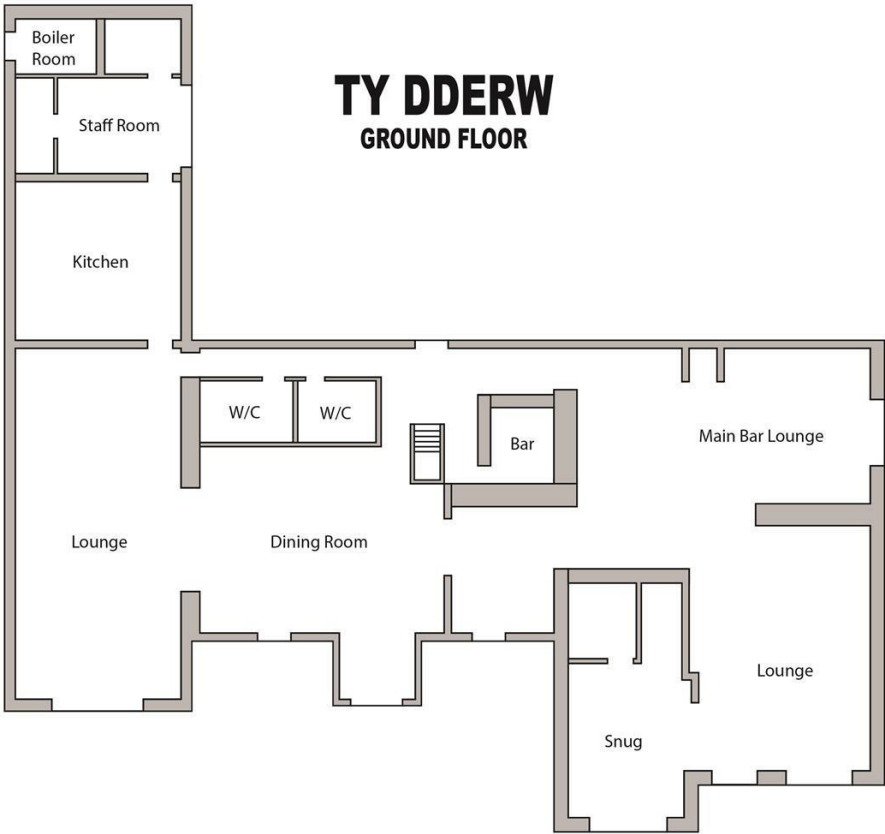
15 Bedroom House - Detached located in Moelfre

Exceptional Investment Opportunity on the Stunning Isle of Anglesey

Ty Dderw is a substantial and versatile property set amidst picturesque open countryside on the beautiful Isle of Anglesey. Just a short walk from the charming maritime village of Moelfre and the popular Anglesey Coastal Path, this former farmhouse and hotel offers an unbeatable location.

The main property features 11 spacious en-suite bedrooms, each enjoying spectacular views of the sea, rolling countryside, or both. Surrounded by farmland, Ty Dderw boasts truly panoramic vistas, providing a peaceful and scenic setting.

Previously operated as a successful hotel and event venue, Ty Dderw is ready for its next chapter. Included within the grounds is the former lodge and restaurant, which benefits from planning permission for six holiday apartments, each with distinctive floor plans, appealing to a wide range of buyers and holidaymakers.



Call us on


0114 312 4994

info@highgatesestates.co.uk

www.highgatesestates.co.uk

Council Tax Band

E

Energy Efficiency Rating		
	Current	Potential
Very energy efficient - lower running costs		
(92 plus) A		
(81-91) B		
(69-80) C		
(55-68) D		
(39-54) E		
(21-38) F		
(1-20) G		
Not energy efficient - higher running costs		
England & Wales	EU Directive 2002/91/EC 	

Agents Note: Whilst every care has been taken to prepare these particulars, they are for guidance purposes only. All measurements are approximate and are for general guidance purposes only and whilst every care has been taken to ensure their accuracy, they should not be relied upon and potential buyers are advised to recheck the measurements.

