

FREEHOLD



House - Terraced

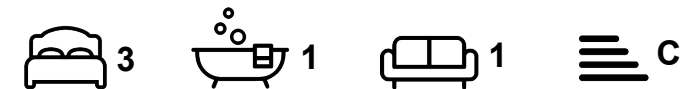
GREEN OAK DRIVE, TOTLEY, SHEFFIELD, S17

Asking price

£215,000

FEATURES

- Spacious 3-bedroom townhouse
- Stunning views over Green Oak Park
- Private rear garden
- Highly regarded school catchment
- Short walk to local shops, pubs, and amenities
- Easy access to the Peak District National Park



HIGHGATES
SALES & LETTINGS

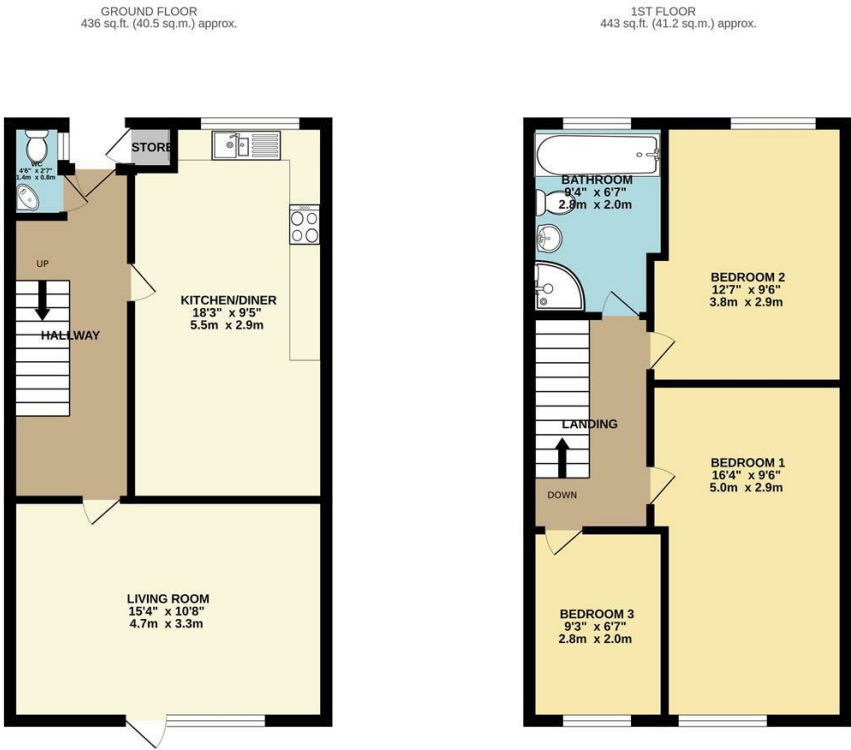
3 Bedroom House - Terraced located in Sheffield

New to the Market – Spacious 3-Bedroom Townhouse with Park Views in Totley

Tucked away in a peaceful cul-de-sac and overlooking Green Oak Park, this deceptively spacious three-bedroom townhouse offers the perfect balance of suburban calm and convenience. With a well maintained private garden to the rear, this home is ideal for families, professionals, or anyone seeking space and serenity on the edge of Sheffield.

Located in the sought-after suburb of Totley, on the south-west fringe of the city, the property enjoys easy access to stunning green spaces, woodland walks, and open countryside. It falls within the catchment area for highly regarded schools, including Dore and Totley Primary and King Egbert Secondary School.

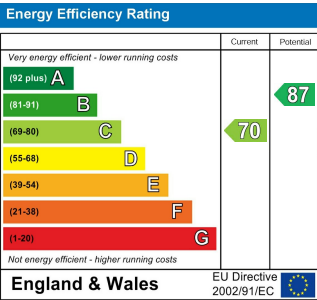
Just a short stroll away is Baslow Road, home to a variety of local amenities including a pharmacy, newsagent, takeaway, restaurant, micropub, and independent shops. A selection of popular pubs are also close by, such as The Cross Scythes, The Shepley Spitfire, The Crown, and the renowned Cricket Inn.



Call us on
0114 312 4994

info@highgatesestates.co.uk
www.highgatesestates.co.uk

Council Tax Band
B



Agents Note: Whilst every care has been taken to prepare these particulars, they are for guidance purposes only. All measurements are approximate and are for general guidance purposes only and whilst every care has been taken to ensure their accuracy, they should not be relied upon and potential buyers are advised to recheck the measurements.