

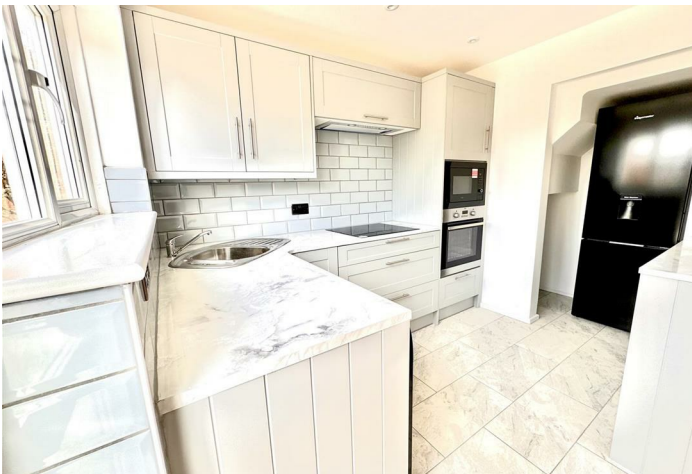


Whealers Walk

Blackfield, SO45 1WX

- No Chain
- Planning permission front and rear extensions
- Extensive front and rear landscaping
- New modern appliances
- Newly refurbished bathroom
- Ready to Move in
- New resin-bound driveway
- New carpets and flooring
- Newly refurbished kitchen
- Three bedrooms

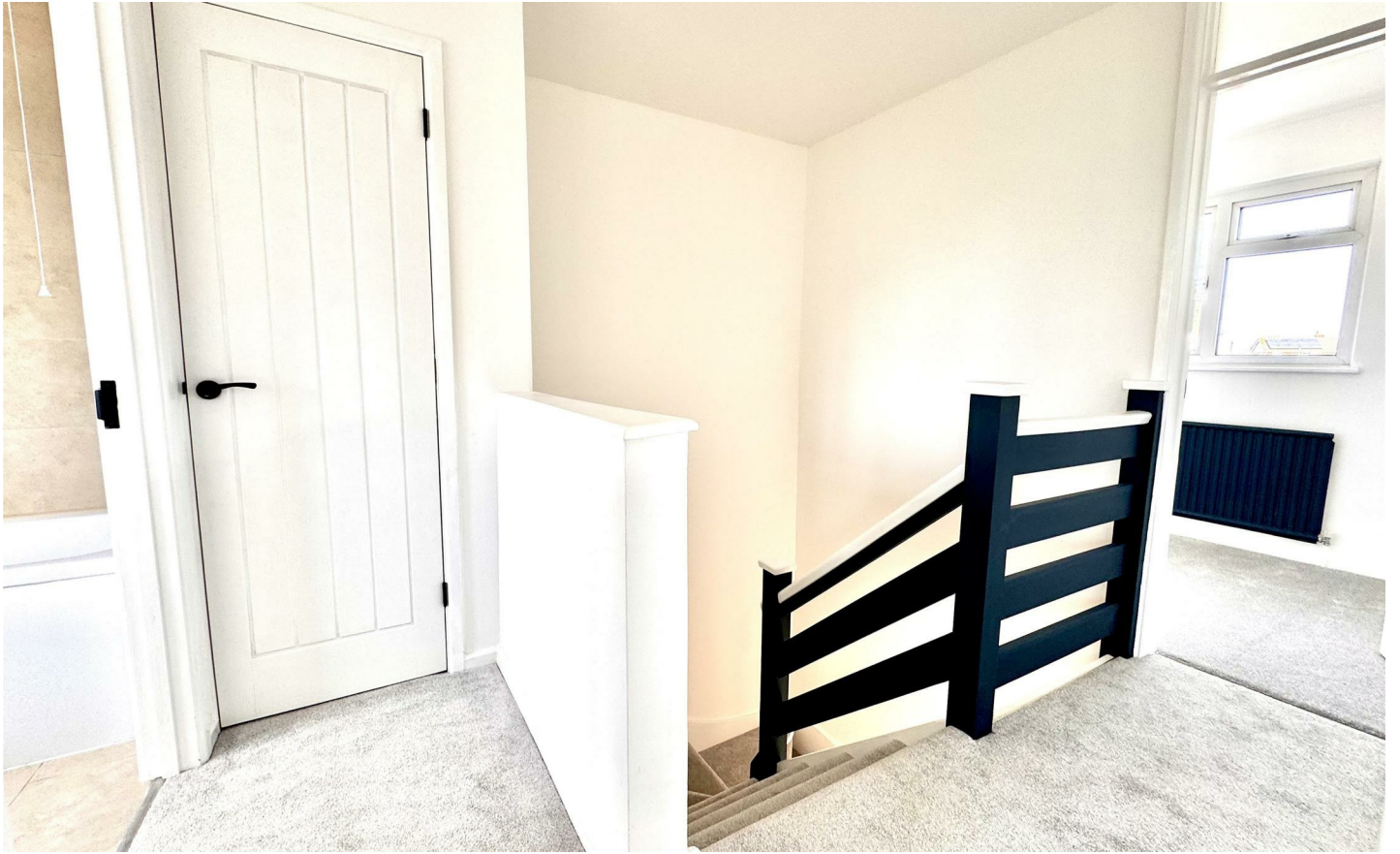
£349,000 Freehold



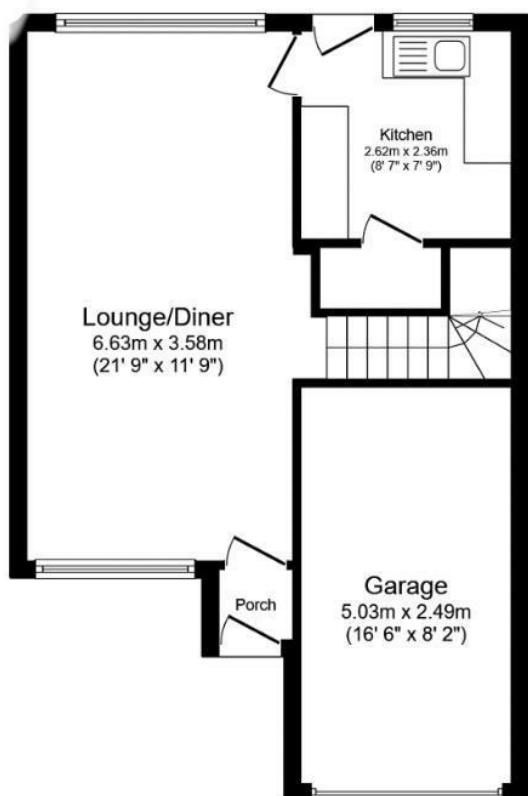


A beautifully refurbished three-bedroom, one-bathroom semi-detached home in sought after Blackfield, Southampton, offering modern living with a range of stylish upgrades. This property has undergone a full renovation, including a new kitchen, bathroom, appliances, carpets, flooring, and tiles throughout. The exterior has been enhanced with extensive landscaping to both the front and rear, including a new resin-bound driveway for added kerb appeal. Additionally, the property comes with planning permission for both front and rear extensions, offering great potential for further expansion.

Ideal for those looking for a modern, move-in-ready home with future potential in a sought-after location.

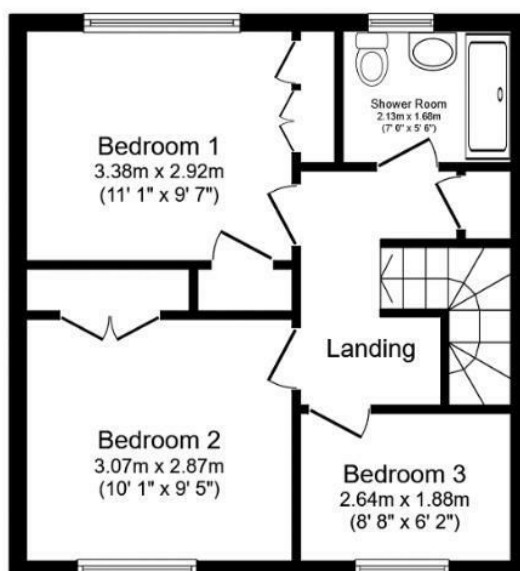


Local Authority **NFDC**
Council Tax Band **C**
EPC Rating **D**



Ground Floor

Floor area 50.0 m² (538 sq.ft.)



First Floor

Floor area 41.4 m² (446 sq.ft.)

TAL: 91.4 m² (984 sq.ft.)

loor plan is for illustrative purposes only. It is not drawn to scale. Any measurements, floor areas (including any total floor area), openings and orientations are approximate. No details are guaranteed, they cannot be relied upon for any purpose and do not form any part of any agreement. No liability is taken for any error, omission or statement. A party must rely upon its own inspection(s).

Citrine Estates Office

7 High Street, Hythe, Southampton,
SO45 6AG

Contact

023 81980 023
christina@citrine-estates.co.uk
www.citrine-estates.co.uk

Agents Note: Whilst every care has been taken to prepare these particulars, they are for guidance purposes only. All measurements are approximate and for general guidance purposes only and whilst every care has been taken to ensure accuracy, they should not be relied upon and potential buyers/tenants are advised to recheck the measurements.