



## 10 Solent View

Calshot SO45 1BH

- DETACHED BUNGALOW
- NATURE VIEWS TO THE FRONT AND REAR
- LANDLY AND PEACEFUL
- SUNNY AND BRIGHT EXTENTION
- PARKING FOR TWO CARS
- THREE DOUBLE BEDROOMS
- PRIVATE GARDEN WITH PATIO
- WALKING DISTANCE TO CALSHOT BEACH
- GOOD NEIGHBOURHOOD
- CALL TO BOOK A VIEWING TODAY

Guide price £325,000 Freehold







### Entrance

This spacious entrance invites you in to the property leading on to most rooms in the bungalow. Newly decorated with wood effect laminate floors, painted walls in a light colour, and has a loft hatch for access to the loft.

### Kitchen

This generous sized kitchen has floor tiles throughout, two windows which allows plenty of light into the room, a modern fitted kitchen with a large range of oak effect wall and base units enhanced by the contrast of grey worktops with green tiled backsplash making it feel warm and inviting.

There is a built in electric oven, a four ring gas hob with an electric extractor hood over, space and plumbing for a washing machine and a dishwasher, and a sink with a modern chrome mixer tap and a watersoftener installed only a few years ago.



### Lounge

In the heart of the house, we find a spacious lounge with new double glass sliding doors, leading out to the new extension with access out to the garden and the protected fields at the back of the bungalow.

### New Extension

This bungalow has a brand new added extension to it with roof windows across the room, windows across the whole front wall and large double glass sliding doors leading out to the back garden and the protected fields at the back of the house.

This is a wonderful extra added space to the house that warms up nicely by the sun in the winter, yet will still keep cool in the summer with the tinted and UV filtered glass.



### Master Bedroom

The master bedroom has a window overlooking the fields at the back of the house. No traffic and only the peace and quite this location can offer! Wood effect laminate flooring, light creme colour painted walls, radiator and space for wall to wall wardrobes and bedroom furnitures.





### Second Bedroom

Good size double bedroom with wood effect laminate flooring, light creme colour painted walls, radiator, window with views over the fields at the front of the bungalow.

### Third Bedroom

The third bedroom is also a double bedroom with a smaller window, wood effect laminate flooring, light creme colour painted walls, radiator and space for a wardrobe and bedroom furnitures.

### Bathroom

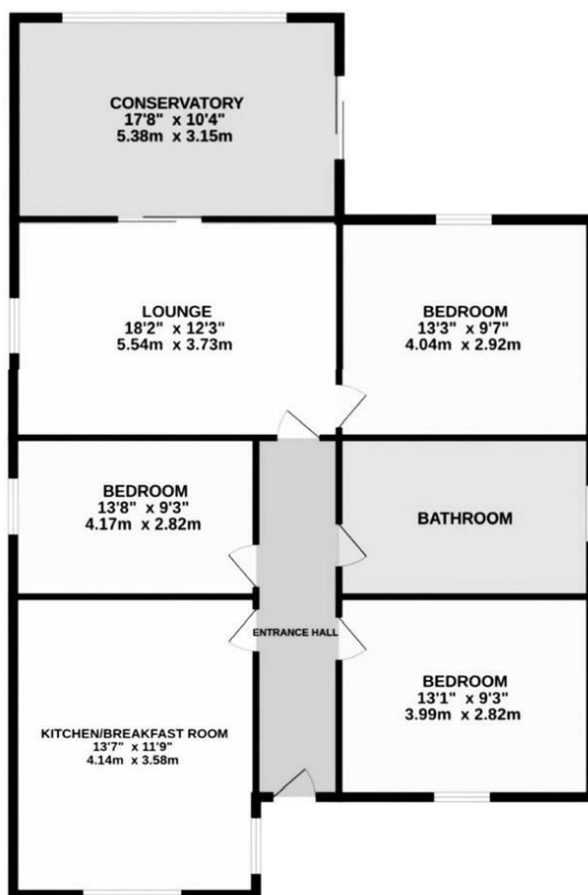
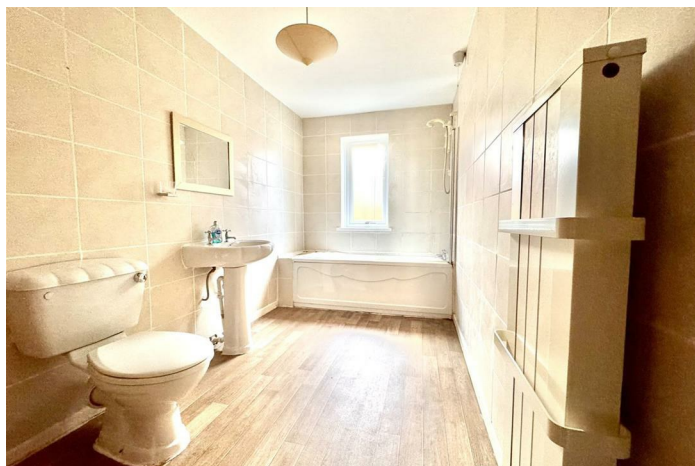
Lovely family bathroom with wood effect laminate floorings, sand coloured tiled walls and a window for natural light. The bathroom consists of a bath, a toilet and a floor standing washbasin.

### Parking

There is parking for two cars in front of the bungalow



Local Authority **New Forest District Council**  
Council Tax Band **C**  
EPC Rating **E**



Whilst every attempt has been made to ensure the accuracy of the floorplan contained here, m of doors, windows, rooms and any other items are approximate and no responsibility is taken ! omission or mis-statement. This plan is for illustrative purposes only and should be used as s prospective purchaser. The services, systems and appliances shown have not been tested and as to their operability or efficiency can be given.  
Made with Metropix ©2024

### Citrine Estates Office

7 High Street, Hythe, Southampton,  
SO45 6AG

### Contact

023 81980 023  
christina@citrine-estates.co.uk  
07737 718782

Agents Note: Whilst every care has been taken to prepare these particulars, they are for guidance purposes only. All measurements are approximate and for general guidance purposes only and whilst every care has been taken to ensure accuracy, they should not be relied upon and potential buyers/tenants are advised to recheck the measurements.