




## 170 Guernsey Avenue Buckshaw Village,

Offers Over £115,000

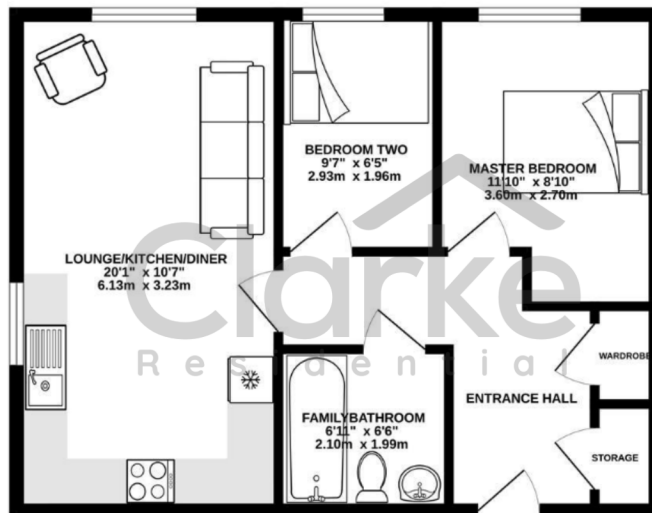
 2
  1
  1



- Allocated Parking
- Popular and convenient location
- Excellent transport links
- Allocated parking
- 
- Top floor apartment with attic
- Close to local amenities
- Bright open-plan living space
- Approx. 521 sq. ft.
-



**GROUND FLOOR**  
521 sq.ft. (48.4 sq.m.) approx.



TOTAL FLOOR AREA: 521 sq.ft. (48.4 sq.m.) approx.  
Whilst every attempt has been made to ensure the accuracy of the floorplan, measurements of rooms, windows, doors and any other items are approximate and no responsibility is taken for any error, omission or mis-statement. This plan is for illustrative purposes only and should be used as a guide only for prospective purchasers. The services, systems and appliances shown have not been tested and no guarantee is given as to their operability or efficiency can be given.  
Made with RoomSketcher 12/2020



A well-presented two-bedroom second floor apartment situated in the popular Buckshaw Village development. Offering bright open-plan living, modern kitchen, two good-sized bedrooms, allocated parking and excellent transport links. Ideal for first-time buyers, professionals or investors. Approx. 521 sq. ft. EPC awaited.