




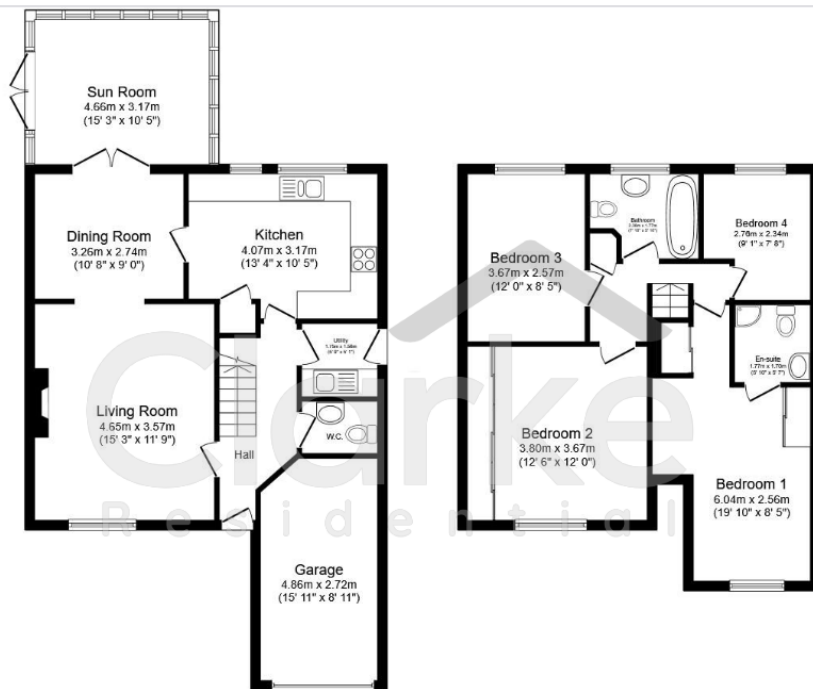
23 New City Road, Worsley

Offers Over £480,000

 4  2  3



- Four-bedroom detached home
- Three reception rooms including rear orangery
- Kitchen with granite work surfaces
- Master bedroom with en-suite
- Single garage and large gated driveway
- Open views across playing fields to the front
- Over 1,400 sq ft of internal accommodation
- Utility room and ground floor WC
- Landscaped rear garden
- Sought-after Worsley location



Ground Floor

First Floor

Total floor area: 137.6 sq. m. (1,481 sq. ft.) approx

The floor plan is provided for general guidance only and is not to scale. All measurements and layouts are approximate. Buyers are advised to satisfy themselves as to the accuracy of the information prior to proceeding.

A well-presented four-bedroom detached family home, positioned on the highly regarded New City Road in Worsley, enjoying open views across playing fields to the front. The property offers generous and flexible accommodation, including three reception rooms, a large kitchen with granite work surfaces, and a rear orangery. Externally, there is a landscaped rear garden, single garage, and a large gated driveway providing ample off-road parking. Well located for schools, transport links, and access into Manchester.