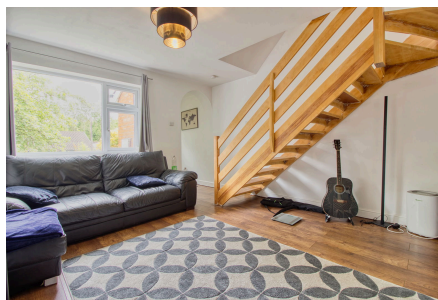


Clover Field, Clayton-le-Woods, Chorley, PR6 7RX

Offers Over £170,000

🛏️ 2 🚿 1 🛋️ 1



Available with no onward chain and tucked away in a peaceful cul-de-sac in the ever-popular Clayton-le-Woods, this thoughtfully updated two-bedroom semi-detached home offers a fantastic opportunity for first-time buyers, downsizers, or investors.

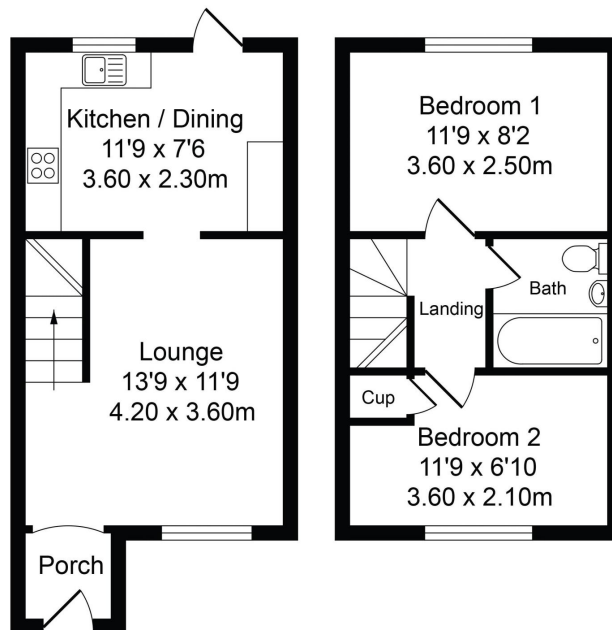
With a new boiler (2022), brand new bathroom (2024), and a re-roofed detached garage (2025), this home is perfect for first-time buyers, downsizers, or those looking for a low-maintenance property with excellent access to transport links, countryside walks, and local amenities.

Key Features

- No onward chain
- Two well-proportioned bedrooms
- Detached garage with new roof
- Bright lounge with modern open staircase and wood-effect flooring
- Peaceful cul-de-sac in sought-after Clayton-le-Woods
- Stylish new bathroom with rainfall shower
- Excellent transport links and scenic countryside walks nearby
- Private rear garden with patio and lawn

Total Approx. Floor Area 527 Sq.ft. (49.0 Sq.M.)

Whilst every effort is made to accurately reproduce these floor plans, measurements are approximate, not to scale and for illustrative purposes only



Ground Floor

Approx. Floor
Area 272 Sq.Ft
(25.3 Sq.M.)

Upper Floor

Approx. Floor
Area 255 Sq.Ft
(23.7 Sq.M.)