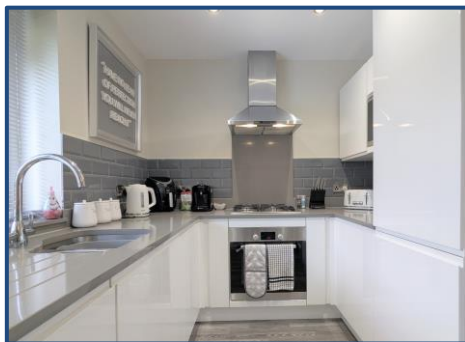


Golf Open 2026 - Part Street, Southport Centre - Sleeps Up To 8

Weekly Rental Of £15,000



Sales

T: 01704 550048

E: sales@ajestateagents.co.uk



Rentals

T: 01704 543434

E: rentals@ajestateagents.co.uk



Property Management

T: 01704 545800

E: pm@ajestateagents.co.uk



**The Property
Ombudsman**

Property Features

- Two Paired Semi Detached Houses
- Four Bedrooms Across Two Properties
- Two Bathrooms
- Two Ground Floor WC'S
- Ideal For Larger Groups
- Modern Feel Throughout
- Off Street Parking
- Private Gated Development



Property Description

AVAILABLE FOR THE ROYAL BIRKDALE OPEN 2026 – SLEEPS 8 A rare and stylish retreat perfectly positioned for the prestigious 2026 Open Championship at Royal Birkdale Golf Club. This unique opportunity offers the rental of two beautifully appointed, self-contained dwellings set within a secure, recently built gated development. Together, they form a detached property comprising four spacious double bedrooms—making it an ideal choice for groups seeking both comfort and privacy during the event. Elegantly styled with a mix of contemporary flair and homely charm, each house includes a bright and inviting reception room, a fully equipped modern kitchen and dining area, and a beautifully finished bathroom with a three-piece suite and rainfall shower. The generously sized double bedrooms feature Juliet-style balcony doors, welcoming in natural light and a refreshing sense of space. With two fully independent homes, guests benefit from double the living areas, dining spaces, and amenities, ensuring ample space and flexibility for a relaxed and convenient stay. Step outside to enjoy two private, well-maintained rear gardens, each featuring composite decking, artificial turf, and stylish outdoor dining areas complete with loungers—ideal for unwinding after a day at the championship. Located just a short drive from Royal Birkdale Golf Club, the property is quietly tucked away near Southport's vibrant Part Street. This central location offers easy access to the town's Victorian charm, leafy streets, independent boutiques, welcoming cafés, lively bars, and a diverse range of restaurants catering to both casual and refined tastes. Guests can stay connected and entertained with complimentary high-speed Wi-Fi and smart TVs in all bedrooms and reception rooms. Flexible check-in and check-out times are available to accommodate your travel plans, helping ensure a smooth and stress-free stay. This coastal gem provides all the modern comforts and space needed for larger groups to enjoy The Open together, all while maintaining a private, tranquil atmosphere. A truly fabulous base for your Royal Birkdale 2026 Open Championship experience.



Sales

T: 01704 550048

E: sales@ajestateagents.co.uk



Rentals

T: 01704 543434

E: rentals@ajestateagents.co.uk



Property Management

T: 01704 545800

E: pm@ajestateagents.co.uk



The Property Ombudsman



Sales

T: 01704 550048

E: sales@ajestateagents.co.uk

naea | propertymark

PROTECTED

Rentals

T: 01704 543434

E: rentals@ajestateagents.co.uk

arla | propertymark

PROTECTED

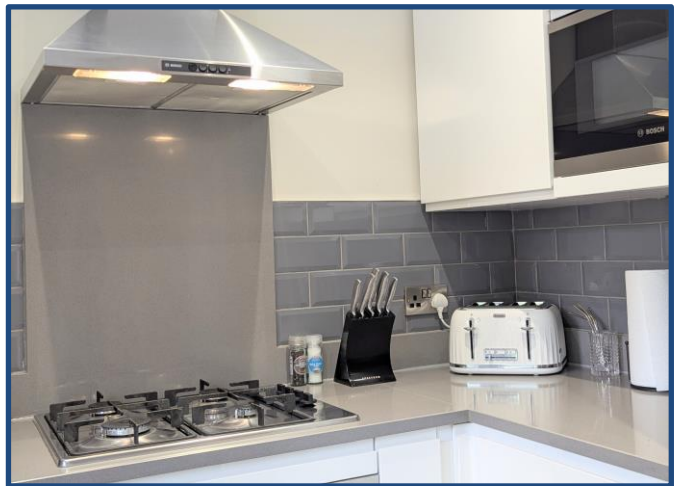
Property Management

T: 01704 545800

E: pm@ajestateagents.co.uk



The Property Ombudsman



Sales

T: 01704 550048

E: sales@ajestateagents.co.uk



Rentals

T: 01704 543434

E: rentals@ajestateagents.co.uk



Property Management

T: 01704 545800

E: pm@ajestateagents.co.uk



The Property
Ombudsman

Ground Floor



First Floor



Disclaimer: Interested parties should satisfy themselves, by inspection or otherwise as to the accuracy of the description given and any floor plans shown in these property details. All measurements, distances and areas listed are approximate. Fixtures, fittings and other items are included unless specified in these details.

Sales

T: 01704 550048

E: sales@ajestateagents.co.uk

naea | propertymark

PROTECTED

Rentals

T: 01704 543434

E: rentals@ajestateagents.co.uk

arla | propertymark

PROTECTED

Property Management

T: 01704 545800

E: pm@ajestateagents.co.uk



**The Property
Ombudsman**