



📍 Plot 5, Courtfield Gardens Polebarn Road,
Trowbridge, Wiltshire, BA14 7EG

💷 £540,000

A brand newly built, three/four bedroom, three bathroom, three storey, end of terrace, townhouse with good sized garden and two allocated parking spaces, which forms part of a small, exclusive development, in the heart of town, built by the renowned, awarding winning Ashford Homes.

- Brand Newly Built, End Of Terrace, Townhouse
- Three/Four Bedrooms
- Bathroom & Two En Suite Shower Rooms
- Stunning Kitchen/Dining Room
- Contemporary Kitchen Units & Integrated Appliances
- Exclusive Development Of Only 20 Homes
- Good Sized Garden
- Allocated Parking For Two Cars
- Underfloor Heating Via An Air Source Heat Pump
- 10 Year, LABC Structural Warranty

🏠 Freehold

🏠 EPC Rating B



Courtfield Gardens is an impressive development, nestled next to the town park in the heart of Trowbridge. This exclusive collection of 20, high specification homes features 16 new build properties and four unique residences within a meticulously restored, Grade II Listed building.

Plot 5 is the show home for the development and offers over 1500 square feet of versatile accommodation, which is arranged over three floors and comprises; entrance hall with cloakroom off, stunning kitchen/dining room with contemporary units, integrated appliances and French doors opening onto the garden, office/snug/bedroom 4, first floor sitting room with large window offering views over the park, principle bedroom with dressing room and en suite shower room, guest bedroom with en suite shower room, further good sized bedroom and a bathroom with modern white suite.

Externally there is a well enclosed, predominately lawned garden with paved patio seating area, which enjoys a good deal of privacy.

Two allocated parking spaces, which are situated in the car park at the end of the terrace. EV charging point.

The property further benefits from underfloor heating via an air source heat pump, double glazing and a 10 year, LABC, structural warranty.

Situation

The property is situated in an exclusive, private setting, in the heart of the town centre and close to schooling for all age groups. Trowbridge is the county town of Wiltshire offering a good range of retail, commercial and leisure facilities as well as a railway station which provides regular services to Salisbury and Southampton to the south and Bristol and Bath to the northwest. The main A350 and A36 are within a short distance of Trowbridge whilst Junction 17 of the M4 Motorway can be reached in approximately 30 minutes travelling time. Nearby towns and centres include Bradford on Avon (3 miles), Melksham (7 miles), Devizes (10 miles), Bath (10 miles) and Swindon (20 miles).

Property Information

EPC Rating; B

Council Tax Band: TBC

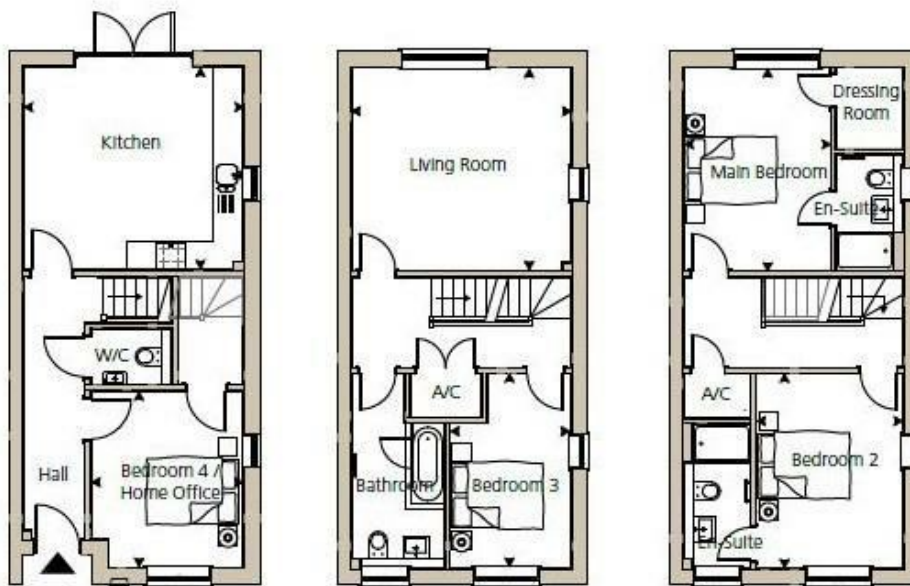
Services; Mains electricity, water and drainage

Underfloor heating via an air source heat pump

Tenure; Freehold

Complete and ready for immediate occupation





PLOTS 1 • 5

SECOND

Main Bedroom

3.08m x 4.25m
(10'1" x 13'11")

Bedroom 2

3.08m x 4.08m
(10'1" x 13'5")

FIRST

Living Room

4.60m x 4.25m
(15'1" x 13'11")

Bedroom 3

2.53m x 4.08m
(8'4" x 13'5")

GROUND

Kitchen

4.60m x 4.25m
(15'1" x 13'11")

Bedroom 4 / Home Office

3.19m x 3.70m
(10'6" x 12'2")

Total Net Sales Area
1539 sq.ft

Disclaimer: These particulars, whilst believed to be accurate are set out as a general outline only for guidance and do not constitute any part of an offer or contract. Intending purchasers should not rely on them as statements of representation of fact, but must satisfy themselves by inspection or otherwise as to their accuracy. No person in this firm's employment has the authority to make or give any representation or warranty in respect of the property. All measurements and distances are approximate only. Your home is at risk if you do not keep up repayments on a mortgage or other loan secured on it.