



📍 30 Broadmead, Trowbridge, Wiltshire, BA14 9BZ

🏠 Guide Price £265,000

An attractive, bay fronted, three bedroom, semi detached house with private rear garden, garage and driveway parking, which is situated on the Bradford on Avon side of the town, within walking distance of schools and amenities.

- Bay Fronted, Semi Detached House
- Three Bedrooms
- In Need Of Updating
- Gas Central Heating & UPVC Double Glazing
- Private Rear Garden
- Garage & Driveway Parking
- Popular Location
- Close To Schools & Amenities
- NO ONWARD CHAIN

🔑 Freehold

🏠 EPC Rating C



An attractive, bay fronted, semi detached house with private rear garden, garage and driveway parking, which is situated on the Bradford on Avon side of the town, within walking distance of schools and amenities. NO ONWARD CHAIN

The property would benefit from some updating and offers accommodation over two floors comprising; entrance hall, good sized sitting/dining room with bow window, kitchen with modern units, two double bedrooms, one single bedroom, bathroom and separate W.C.

Externally there is a lawned garden to the front and a private, well enclosed, predominately lawned garden to the rear.

Single garage with up and over door to front, power and lighting. Driveway parking in front of the garage.

Situation

The Broadmead development is situated on the western side of Trowbridge, which is the County town of Wiltshire. The town offers a wide range of amenities including various supermarkets and retail outlets, swimming pool and sports centres, library, doctors and dental surgeries, cinema complex with various bars and restaurants and a mainline railway station providing direct access to the cities of Bath, Bristol and London Waterloo. There are also numerous primary schools and three secondary schools. The World Heritage City of Bath is about 12 miles away and provides an extensive range of amenities with excellent shopping facilities, The Theatre Royal, Thermae Bath Spa, a cinema, numerous restaurants, many schools and a mainline railway station providing direct access to London Paddington.

Property Information

Council Tax Band; C

EPC Rating; C

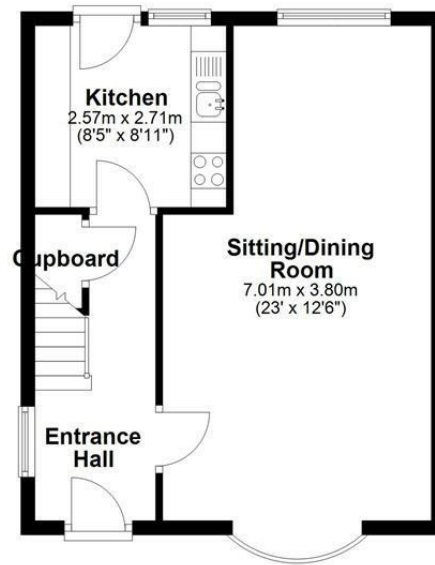
Freehold

Mains Services

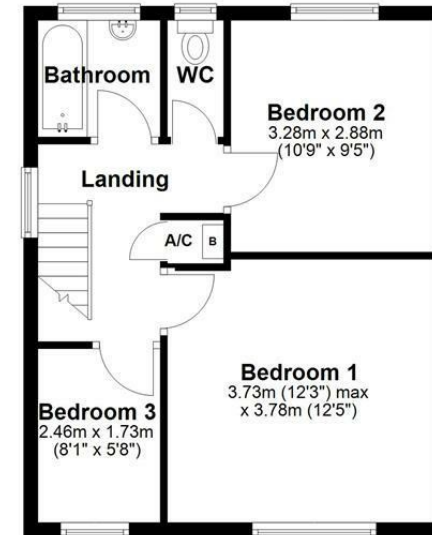
Gas Fired Central Heating & UPVC Double Glazing



Ground Floor



First Floor



Total area: approx. 93.5 sq. metres (1006.3 sq. feet)

Disclaimer: These particulars, whilst believed to be accurate are set out as a general outline only for guidance and do not constitute any part of an offer or contract. Intending purchasers should not rely on them as statements of representation of fact, but must satisfy themselves by inspection or otherwise as to their accuracy. No person in this firm's employment has the authority to make or give any representation or warranty in respect of the property. All measurements and distances are approximate only. Your home is at risk if you do not keep up repayments on a mortgage or other loan secured on it.