



📍 17 Woodhouse Gardens, Hilperton, Trowbridge, Wiltshire, BA14 7QX

🏠 £230,000

A modern, well proportioned, three bedroom, end of terrace house with private rear garden and two allocated parking spaces, which is situated on the popular Paxcroft Mead development, with walking distance of schools and amenities.

- Attractive, End Of Terrace House
- Three Bedrooms
- Good Sized Sitting/Dining Room
- Cloakroom
- UPVC Double Glazing & Gas Central Heating
- Lovely Rear Garden
- Two Allocated Parking Spaces
- Popular Location, Within Walking Distance Of A Primary School
- Close To Amenities
- Vendor Suited

🏡 Freehold

🏠 EPC Rating C



A modern, well proportioned, end of terrace house with private rear garden and two allocated parking spaces, which is situated on the popular Paxcroft Mead development, with walking distance of schools and amenities.

The accommodation is arranged over two floors and comprises; entrance hall with cloakroom off, good sized sitting/dining room with feature fireplace, cupboard under stairs and French doors opening onto the rear garden, kitchen with built in oven, hob and extractor, principle bedroom with built in wardrobes, two further bedrooms and a bathroom with white suite.

Externally there is a small garden to the front with a paved path leading to the front door. To the rear there is a lovingly maintained garden with paved patio seating area, level lawn and timber decked seating area. The garden is private, well enclosed by hedging and fencing and enjoys a sunny aspect.

Two allocated parking spaces, situated to the left hand side of the property.

Situation

Paxcroft Mead forms part of the popular village of Hilperton which is situated on the outskirts of Trowbridge and offers its own primary school, public house, church, village hall and is close to open countryside walks and the Kennet and Avon canal. The nearby village of Holt, offers further excellent pubs and the National Trust "Court gardens" with areas to relax and walk. Transport links include a regular bus service to Trowbridge where there is a main line train station offering easy access to the Georgian city of Bath (approximately 7 miles) and Bristol Temple Meads (approximately 18 miles).

Property Information

Council Tax Band; C

EPC Rating; C

Freehold

Mains Services

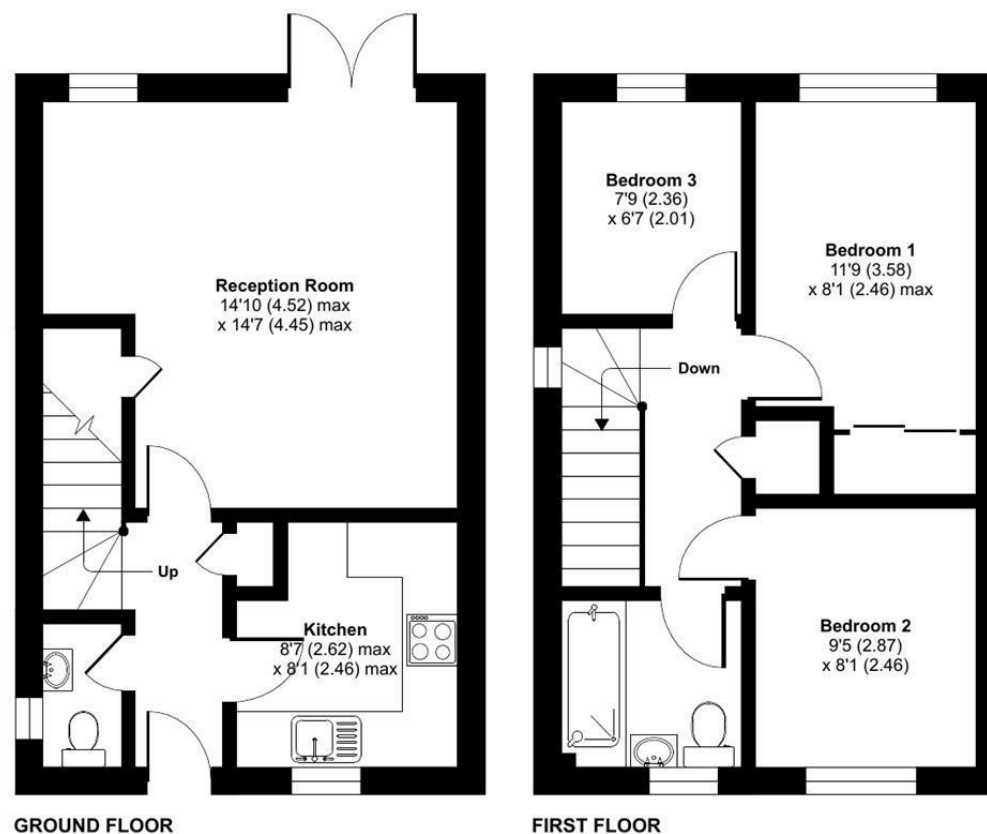
Gas Fired Central Heating



Woodhouse Gardens, Hilpertont, Trowbridge, BA14

Approximate Area = 720 sq ft / 66.8 sq m

For identification only - Not to scale



Floor plan produced in accordance with RICS Property Measurement 2nd Edition, Incorporating International Property Measurement Standards (IPMS2 Residential). © nitchecom 2025. Produced for Strakers. REF: 1257475

Disclaimer These particulars, whilst believed to be accurate are set out as a general outline only for guidance and do not constitute any part of an offer or contract. Intending purchasers should not rely on them as statements of representation of fact, but must satisfy themselves by inspection or otherwise as to their accuracy. No person in this firms employment has the authority to make or give any representation or warranty in respect of the property. All measurements and distances are approximate only. Your home is at risk if you do not keep up repayments on a mortgage or other loan secured on it.