



55 CHELSEA 55 TOWERS



Chelsea Towers is an 82 sq. meter apartment located a moments walk from King's Road, the River Thames and Battersea Park in the heart of Chelsea. Situated on the seventh floor of a desirable, portered, residential block the south-westerly aspect fills the apartment with light and rarely afforded views over the rooftops of Chelsea and many London landmarks.

The apartment has been comprehensively refurbished to provide thoughtfully arranged and flexible accommodation. The aesthetic of the apartment is accentuated with beautiful material choices in every room, a subtle palette creates a calming environment to live and entertain.













Specification

- White oiled engineered oak flooring.
- Verde Ming marble worksurfaces and upstand.
- Roman travertine in the bath and shower rooms.
- Oak wall paneling.
- Bespoke joinery throughout.
- Fisher & Paykel appliances.
- Foster modular induction hob.
- Quooker tap & filter.
- Crosswater sanitaryware in brushed brass and brushed nickel.

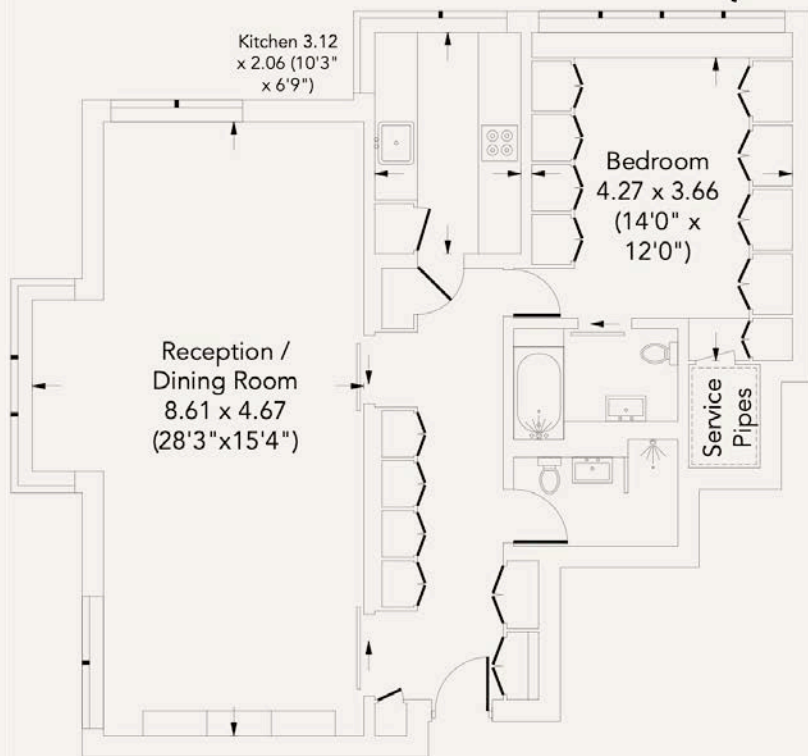
Building Information

- Communal roof terrace
- Porter
- Lift
- Local AuthorityRBKC.
- EPCest C.
- Leasehold109 Years Remaining.
- Service Chargec.£6,000 pa.
- Ground Rent£100 pa.





Chelsea Towers, Chelsea Manor Gardens, SW3



Seventh Floor

Approx Gross Internal
Area Limited Use
Area

892 Sq Ft - 82.9 Sq M
46 Sq Ft - 4.3 Sq M

For Illustration Purposes Only - Not To Scale

Every attempt has been made to ensure the accuracy of this floor plan however measurements are approximate and for illustration purposes only.
Measured in accordance with the RICS code of measuring practice. Not to scale.

