



MORGAN ASSOCIATES

— ESTATE & LETTINGS AGENCY —



7, Eltham Lawn,
Cheltenham GL50 2LS
£1,350 PCM



7, Eltham Lawn,

Cheltenham GL50 2LS

A delightful two bedroom, one bathroom apartment on the ever popular Queens Road in Cheltenham, finished to a high standard and offered on an unfurnished basis. This spacious property boasts a central hallway, modern kitchen, a balcony with views over the communal gardens, and comes very well presented. The apartment also benefits from an allocated off-road parking space for one car and is warmed by gas central heating.



Floor Plan

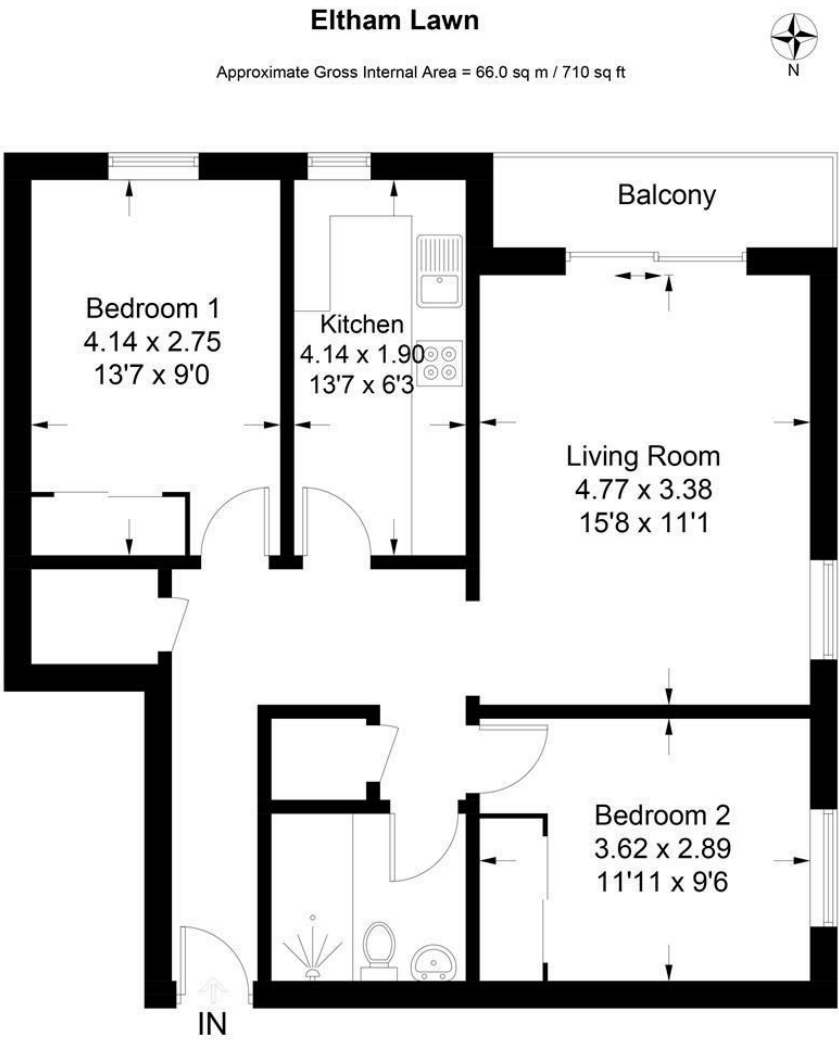
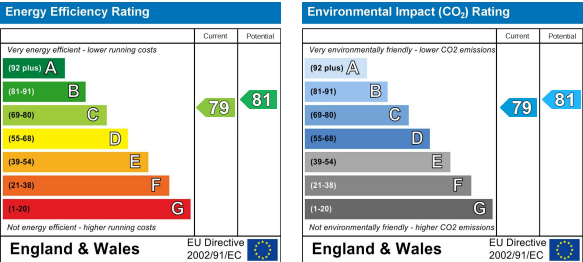


Illustration for identification purposes only, measurements are approximate, not to scale. Fourlabs.co © (ID1235086)

These particulars, whilst believed to be accurate are set out as a general outline only for guidance and do not constitute any part of an offer or contract. Intending purchasers should not rely on them as statements of representation of fact, but must satisfy themselves by inspection or otherwise as to their accuracy. No person in this firms employment has the authority to make or give any representation or warranty in respect of the property.

Energy Efficiency Graph



Area Map



Viewing

Please contact us on 01242 514 285 if you wish to arrange a viewing appointment for this property or require further information.

Rotunda Buildings Montpellier Exchange
Cheltenham
Gloucestershire
GL50 1SJ

T. 01242 514 285
E. info@morgan-associates.co.uk
W. www.morgan-associates.co.uk

