



MORGAN ASSOCIATES

ESTATE & LETTINGS AGENCY



York Street
GL52 2JT
£1,100 PCM



York Street

GL52 2JT

A well-presented two-bedroom mid-terrace house, situated in the ever-popular Fairview area—just a short walk from Cheltenham town centre and the shops at Pittville.

The property benefits from residents' on-street permit parking and a private rear garden. Internally, the accommodation is arranged over two floors and is offered on an unfurnished basis. The ground floor comprises a living room with a fireplace and handy understairs storage, a separate dining room with doors opening onto the garden, and a modern kitchen fitted with a range of units and integrated appliances.

Upstairs, there are two double bedrooms and a bathroom with a shower over the bath. The house is double glazed and enjoys gas central heating throughout.



Floor Plan

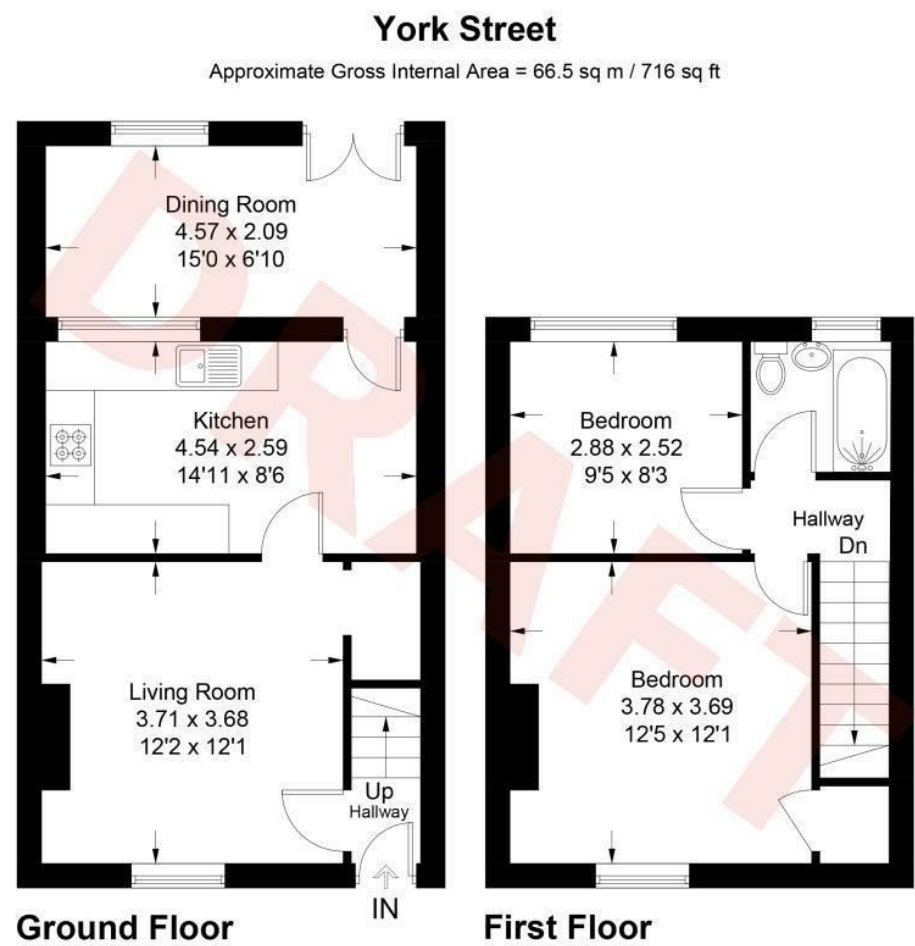
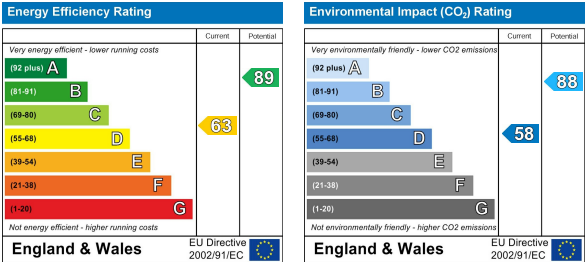


Illustration for identification purposes only, measurements are approximate, not to scale. Fourlabs.co © (ID1207752)

These particulars, whilst believed to be accurate are set out as a general outline only for guidance and do not constitute any part of an offer or contract. Intending purchasers should not rely on them as statements of representation of fact, but must satisfy themselves by inspection or otherwise as to their accuracy. No person in this firms employment has the authority to make or give any representation or warranty in respect of the property.

Energy Efficiency Graph



Area Map



Viewing

Please contact us on 01242 514 285 if you wish to arrange a viewing appointment for this property or require further information.

Rotunda Buildings Montpellier Exchange
Cheltenham
Gloucestershire
GL50 1SJ

T. 01242 514 285
E. info@morgan-associates.co.uk
W. www.morgan-associates.co.uk

