



MORGAN ASSOCIATES

— ESTATE & LETTINGS AGENCY —



Apartment 2, Regency Square, Tryes Road,  
Cheltenham GL50 2DP  
£1,295 Per Month





**Apartment 2, Regency Square,  
Tryes Road,  
Cheltenham GL50 2DP**

A bright and contemporary two double bedroom ground floor apartment, set within a purpose-built development in the sought-after area of Leckhampton. Offered unfurnished, the property enjoys excellent access to central Cheltenham and is within easy walking distance of the shops, cafés and amenities along Bath Road.

Well presented throughout, the apartment features a spacious open-plan living and dining area with a modern fitted kitchen complete with integrated appliances. Patio doors open directly onto a terrace - perfect for morning coffee or evening drinks.

There are two generous double bedrooms, one of which benefits from built-in storage and a sleek en-suite shower room. A second bathroom offers a full suite with a shower over the bath.

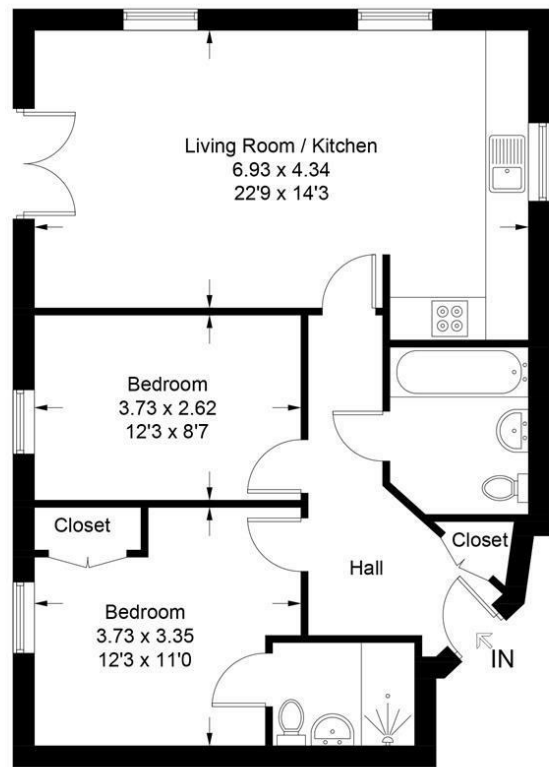
Further highlights include secure off-street parking for one car, well-maintained communal gardens, and electric storage heating throughout.



Floor Plan

Regency Square

Approximate Gross Internal Area = 63.60 sq m / 684 sq ft

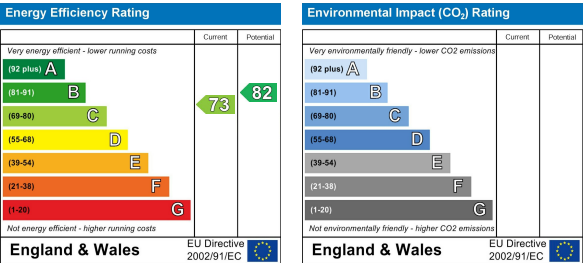


Ground Floor

Illustration for identification purposes only, measurements are approximate, not to scale. Fourlabs.co © (ID1199437)

These particulars, whilst believed to be accurate are set out as a general outline only for guidance and do not constitute any part of an offer or contract. Intending purchasers should not rely on them as statements of representation of fact, but must satisfy themselves by inspection or otherwise as to their accuracy. No person in this firms employment has the authority to make or give any representation or warranty in respect of the property.

Energy Efficiency Graph



Area Map



Viewing

Please contact us on 01242 514 285 if you wish to arrange a viewing appointment for this property or require further information.

Rotunda Buildings Montpellier Exchange  
Cheltenham  
Gloucestershire  
GL50 1SJ

T. 01242 514 285  
E. info@morgan-associates.co.uk  
W. www.morgan-associates.co.uk

