

# VISIONI

R E A L E S T A T E

**11 Barrosa Road, Aldershot,  
GU11 4DQ**



**4 Bedrooms**



**3 Bathrooms**



**1648 sq ft**



# 11 Barrosa Road, Aldershot

£600,000

## Description

Designed with family life in mind, this freehold property is arranged to make the most of light and space. The entrance hall sits at the centre of the home, leading on one side to a welcoming living room ideal for relaxation and on the other to a bright kitchen and dining area. The kitchen features a breakfast bar, fitted units and modern appliances, with the adjoining utility room providing further practicality. Double doors open directly to the garden, allowing the dining area to extend easily into the outdoors. A cloakroom is also set on the ground floor.

The first floor is home to two well-proportioned bedrooms, including a master bedroom complete with built-in wardrobes and a stylish en suite shower room. The second bedroom on this level is also a comfortable double and is served by a modern family bathroom. The top floor provides two further bedrooms together with an additional bathroom, making this home ideal for families with children of different ages, or for those who may want a guest room, study or hobby space. Each bathroom is finished to a high modern standard. The garden is a key feature, enjoying a sunny south facing position and offering both privacy and space rarely found on new developments. Mainly laid to lawn with a patio that connects directly to the kitchen and dining area, it provides the perfect place for children to play, for family gatherings or for summer entertaining. To the side of the property, a driveway gives access to a garage, providing secure parking and storage.





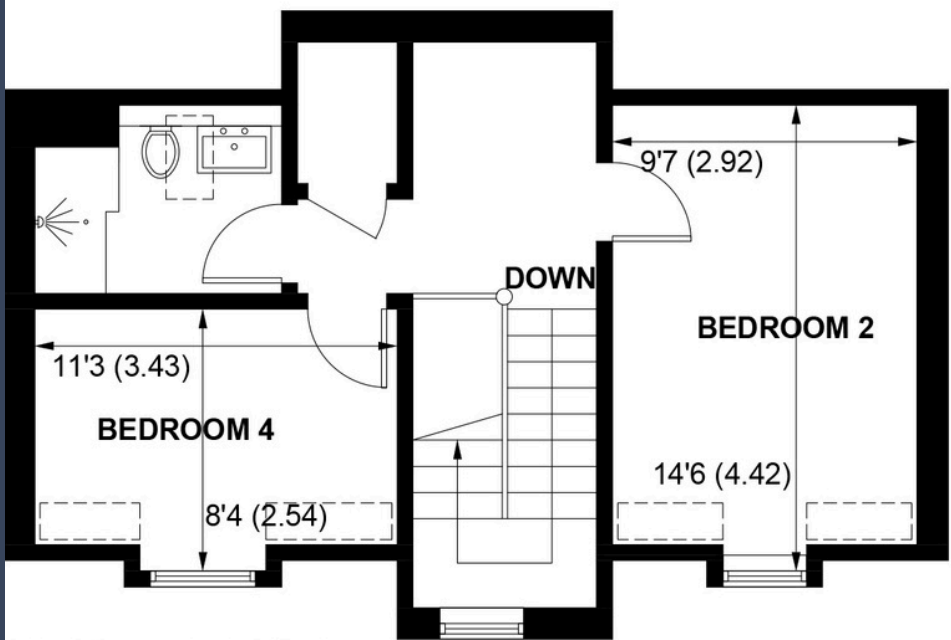




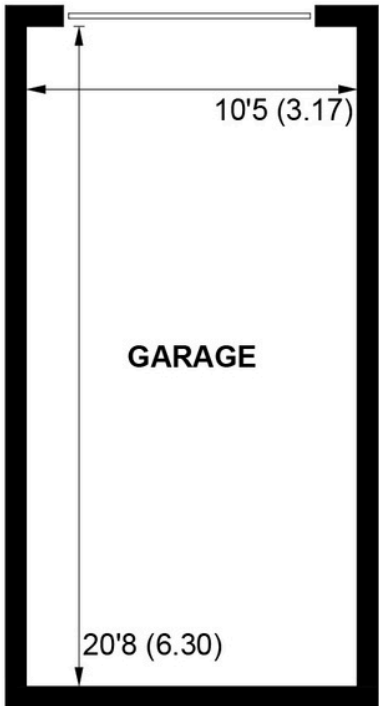




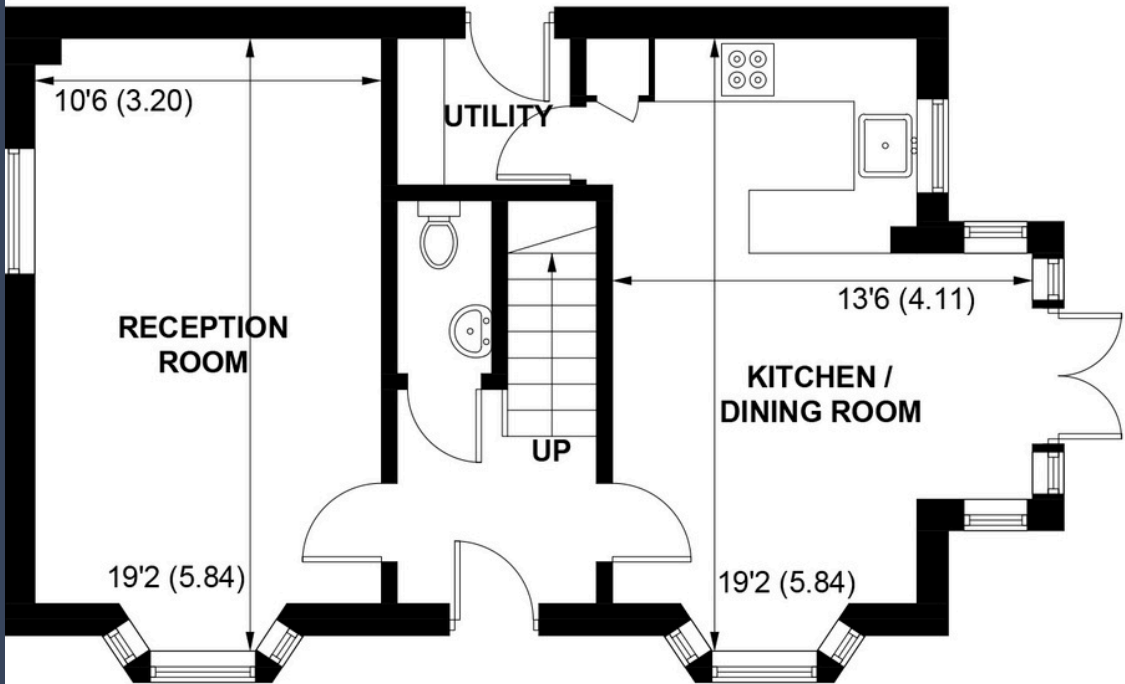
Barrosa Road,  
Aldershot



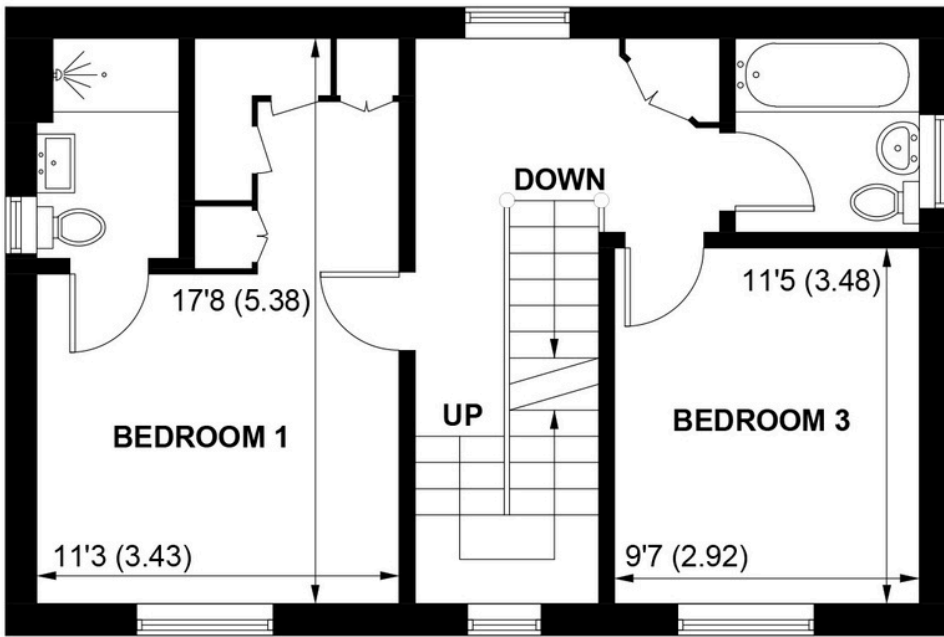
SECOND FLOOR



(NOT SHOWN IN ACTUAL  
LOCATION / ORIENTATION)



GROUND FLOOR



FIRST FLOOR

APPROXIMATE GROSS INTERNAL AREA = 1435 SQ FT / 133.3 SQ M

GARAGE = 213 SQ FT / 19.8 SQ M

TOTAL = 1648 SQ FT / 153.1 SQ M

NOT TO SCALE (For illustrative purposes only as defined by RICS Code of Measuring Practice) 2025 ©

Created by Emzo marketing Ltd

Produced for Visioli Real Estate

Contact Us



01252210145



[visiolirealestate.co.uk](https://visiolirealestate.co.uk)



[sales@visiolirealestate.co.uk](mailto:sales@visiolirealestate.co.uk)