



Lampards

lampards.co.uk
0208 208 0055
info@lampards.co.uk

4a Lonsdale Road,
Queens park,
NW6 6RD

Aylestone Avenue,
£3,796PCM (Deposit: £4,380)

🛏 3 🚿 1 🚿 1



Tax Band: Furnished: Not Specified

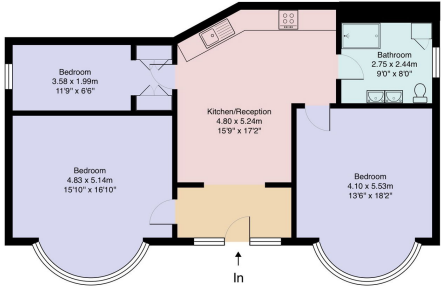
well-presented three-bedroom ground floor apartment
extending to approximately 924 sq ft, conveniently located
close to the amenities and open spaces of Queen's Park.





Lampards

Aylestone Avenue, NW6
Total Area: 85.8 m² ... 924 ft²



Ground Floor

This floor plan is produced in accordance with RICS Property Measurement Standards incorporating International Property Measurement Standards (IPMS). The plan is for general guidance only and not drawn to scale unless otherwise stated. Measurements and position of windows, door openings, rooms and any other items are approximate. Whilst all care is taken in the preparation of this plan, if any aspects of the plan are of specific importance, an independent inspection would be advised.

Score	Energy rating	Current	Potential
92+	A		
81-91	B		
69-80	C		78 C
55-68	D	68 D	
39-54	E		
21-38	F		
1-20	G		

