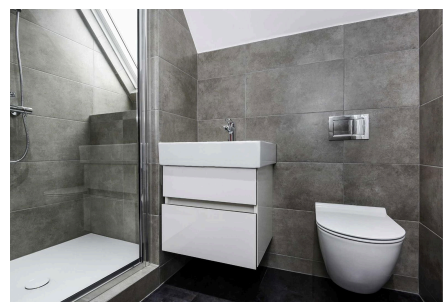
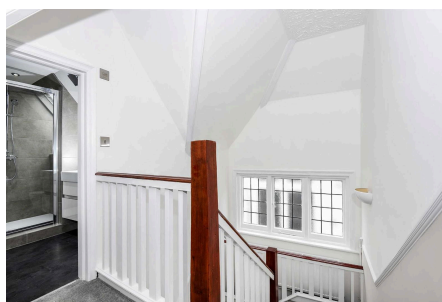


St. Gabriels Road,

£350,000

 1  1  1



Offered with a Share of Freehold.

Located on the second floor of a well-maintained period building, this refurbished one-bedroom flat offers 570 sq ft of thoughtfully designed living space in the heart of the Mapesbury Conservation Area.

The property features a bright, open-plan kitchen and reception room with a contemporary finish, integrated appliances, and a breakfast bar. The double bedroom includes access to generous eaves storage, and the modern shower room is smartly appointed. The flat benefits from a recently extended lease and level access from the street.

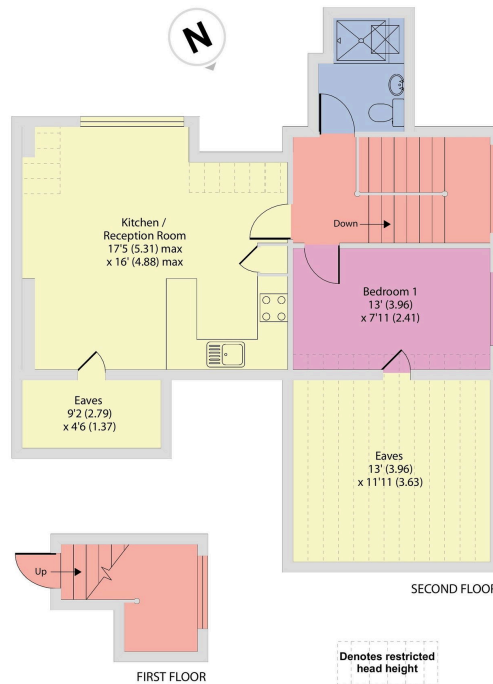
Key Features

- Refurbished one-bedroom flat
- Located in the Mapesbury Conservation Area
- Open-plan kitchen/reception with breakfast bar
- Modern shower room
- Recently extended lease
- 570 sq ft of internal space
- Situated on the second floor of a period building
- Integrated appliances included
- Double bedroom with eaves storage access
- Offered with a share of freehold

Lampards

St. Gabriels Road, London, NW2

Approximate Area = 570 sq ft / 52.9 sq m
Limited Use Area(s) = 201 sq ft / 18.6 sq m
Total = 771 sq ft / 71.6 sq m
For identification only - Not to scale



Floor plan produced in accordance with RICS Property Measurement 2nd Edition, Incorporating International Property Measurement Standards (IPMS2 Residential). © richcom 2025. REF: 596484