

## Brondesbury Villas, London, NW6 6AB

£700,000

🛏 2 🚿 2 🛋 1



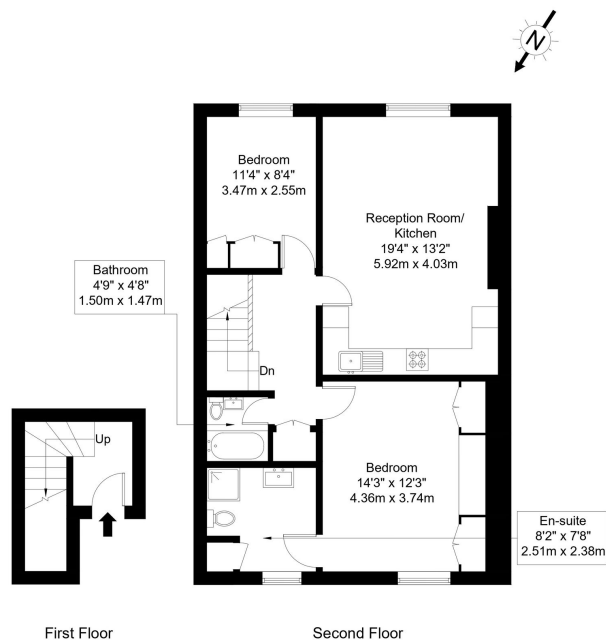
This beautifully refurbished 2-bedroom apartment occupies the top (second) floor of a charming period building, offering 833 sq ft of living space. It features two spacious double bedrooms, two stylish bathrooms, and a bright open-plan kitchen and reception room, plus access to a well-kept communal garden. The building has recently undergone external refurbishment, and the roof has been renewed.

## Key Features

- Refurbished 2-bedroom apartment (833 sq ft)
- Access to a communal garden.
- 10-min walk to Queen's Park station, 5-min to Kilburn High Road station.
- 970+ years remaining on the lease.
- Chain Free.
- Includes two bathrooms, and an open-plan kitchen/reception room.
- Located near shops, cafes, and restaurants in Queen's Park.
- Share of Freehold
- On the top floor of a period building.
- Close to Lonsdale Road and Salusbury Road

## Brondesbury Villas, NW6 6AB

Approx Gross Internal Area = 75.98 sq m / 817 sq ft



Ref :

Copyright **BLEU PLAN**

The Floor plan is not to scale and measurements and areas shown are approximate and therefore should be used for illustrative purposes only. The plan has been prepared in accordance with the RICS code of Measuring Practice and whilst we have confidence in the information produced it must not be relied on. If there is any aspect of particular importance, you should carry out or commission your own inspection of the property.  
Copyright @ BLEUPLAN