



**1 Bed
Flat - Purpose Built
located in**



Temple Court Barton
Road
Bristol
BS2 0LF



£1,300 Per month

A well-presented one bedroom apartment available from the 20th of January, perfectly placed for easy city centre living. The ground floor home features a modern kitchen fitted with white goods and a stylish wooden counter top, opening into a comfortable living space. The large bedroom offers plenty of room for furniture, while the bathroom is finished to a high specification and includes a shower over the bath, toilet and sink. Offered unfurnished, it provides a blank canvas to make your own.

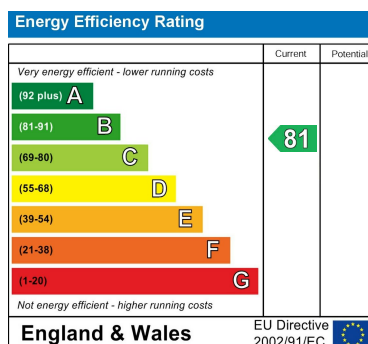
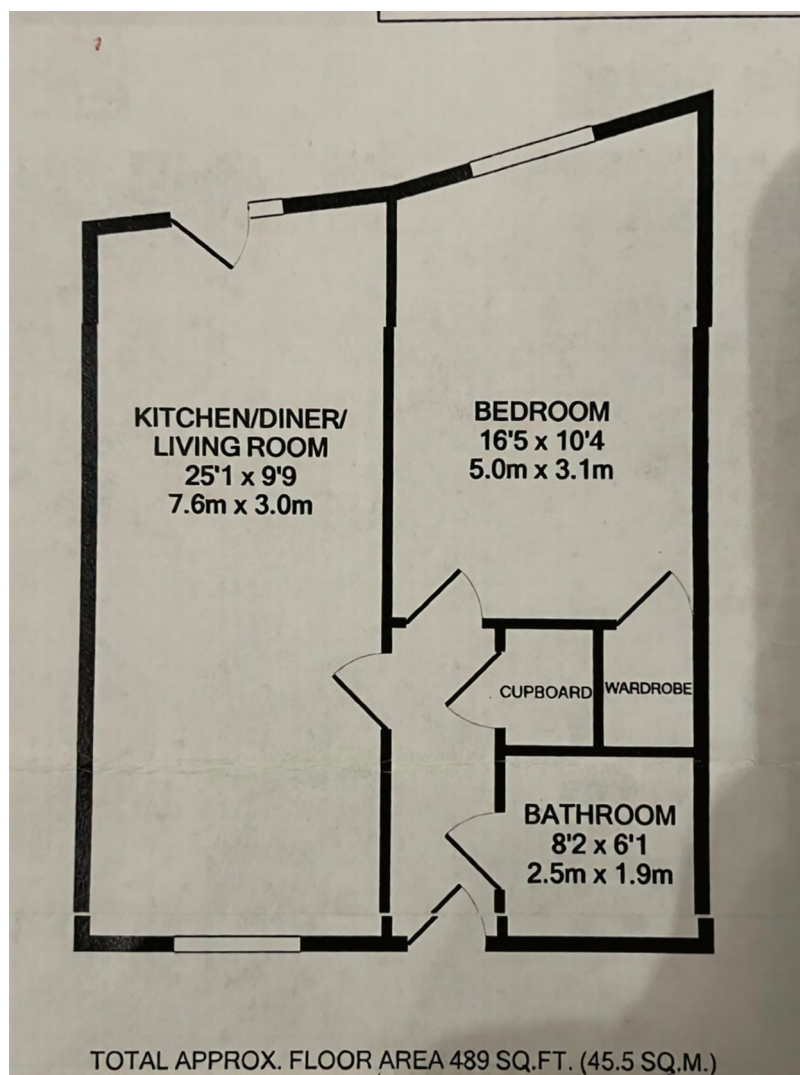
The location is a major draw – Sainsbury’s and Mokoko are just around the corner for everyday essentials and great coffee. You’re right in the heart of the city, with everything on your doorstep and excellent links across Bristol. Temple Quay is a 5 minute walk, Temple Meads around 10 minutes, and Victoria Street roughly 15 minutes on foot. There are also plenty of other local amenities right on your doorstep!

Ideal for a single professional or couple wanting convenience, comfort and a central base.

EPC rating B.
Council Tax Band A.
Rent: £1300pcm
Security Deposit: £1500

Please note that the property is currently being redecorated, and the bedroom will be freshly painted white in time for the new tenancy.





DIRECTIONS

CONTACT

Shore House Westbury Hill
Westbury-on Trym, Bristol
BS9 3AA

E: elliott.sherwood@frontdoorlettings.co.uk

T: 0117 457 8577

frontdoorlettings.co.uk

