

**1 Bed
Room
located in Redfield**

 **FRONT
DOOR**
LETTINGS

Room 2, 147 Avonvale
Road
Redfield
Bristol
BS5 9RX



£725 Per month

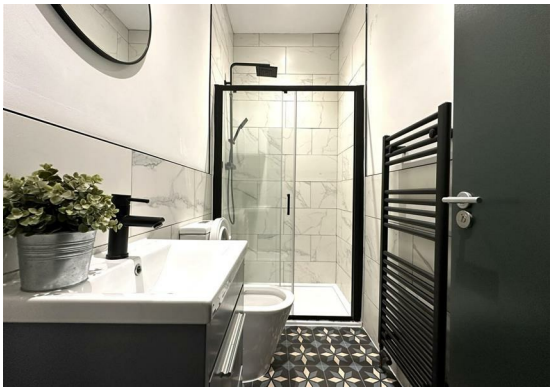
Welcome to a brand new 6-bed home created for modern professional living. The property is finished to a high standard throughout and offers spacious, fully furnished rooms designed for working professionals.

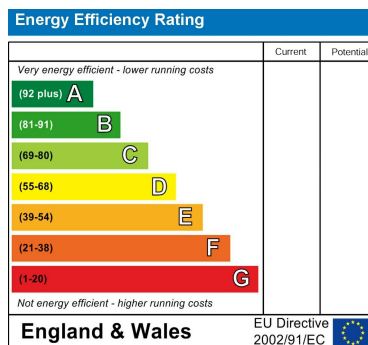
Room 2 is located on the first floor at the top of the stairs and has windows looking out onto the rear courtyard and park in the distance.

The house features six fully furnished double bedrooms, two modern communal bathrooms with showers, a stylish living room with sofa, dining space and wall-mounted TV, and a large kitchen with double ovens, ample storage, washing machine, tumble dryer and dishwasher. High-speed broadband is also included.

Tenancy length - 9 months - through to 31st July 2026.

- Key Features
- Two main bathrooms
 - All bills included (gas, electric, water, council tax, broadband, TV licence for communal area)
 - Fully furnished rooms with double bed, wardrobe, desk, and chair
 - Communal lounge and kitchen
 - Excellent access to central Bristol and Temple Meads station
 - Close to Church Road's cafés, shops, and bars
 - Great bus and cycle links





DIRECTIONS

CONTACT

Shore House Westbury Hill
Westbury-on Trym, Bristol
BS9 3AA

E: elliott.sherwood@frontdoorlettings.co.uk

T: 0117 457 8577

frontdoorlettings.co.uk

