

**1 Bed**  
**House - End Terrace**  
**located in**



# Room 6, 28 Bridgeman Grove Filton BS34 7HR



1



3



1



D

## £775 Per month

Bridgman Grove – 8 Bedroom Student House

Available for 2025/26 Academic Year

All Bills Included | 3 Bathrooms | TV in Every Room | Room by room

A brand-new, fully renovated 8-bed student house finished to a high standard throughout. Located close to UWE, this property is perfect for students looking for modern living with convenience.

Each bedroom comes fully furnished and includes a wall-mounted TV. The house offers three modern bathrooms, spacious communal areas, and a sleek, high-spec kitchen.

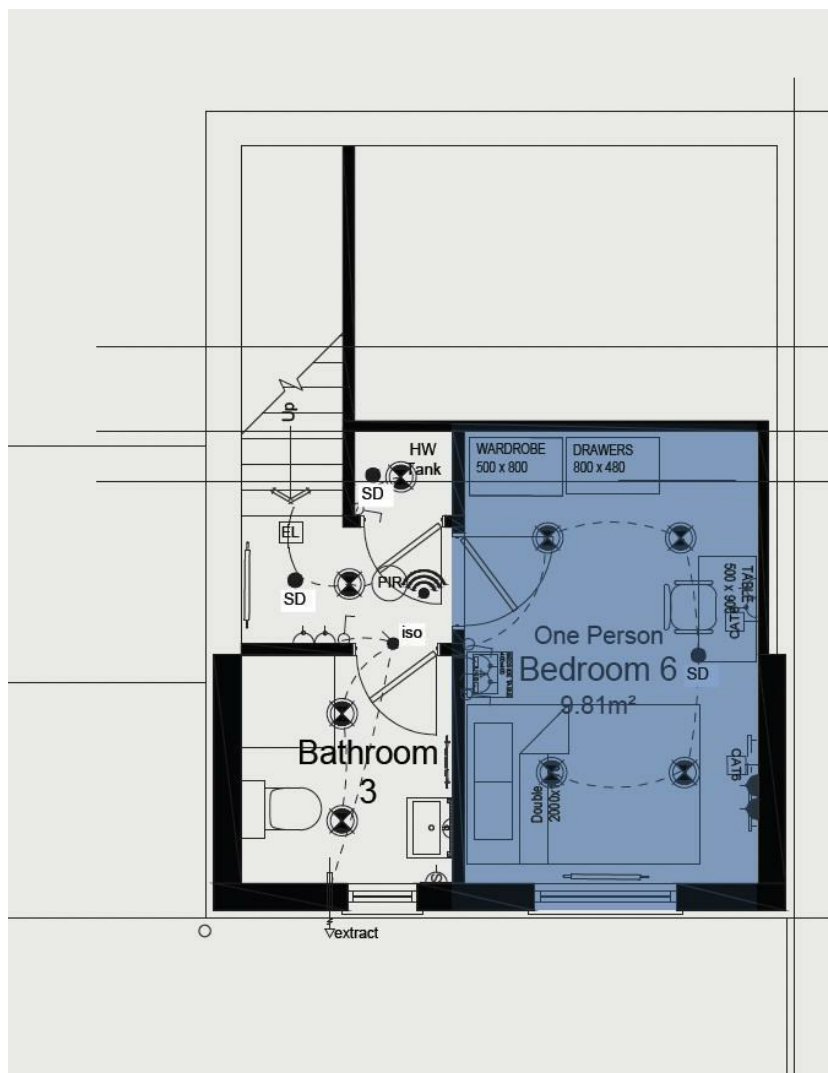
Let on a room-by-room basis – ideal for individuals or groups.

Key Features:

- 8 Bedrooms
- 3 Bathrooms
- TV in Every Room
- Fully Furnished
- Room-by-Room Lets
- All Bills Included
- Newly Renovated
- Close to UWE
- 20 minute walk to UWE
- Rent £775

Enquire now to secure your room!





Energy Efficiency Rating		
	Current	Potential
Very energy efficient - lower running costs		
(92 plus) <b>A</b>		
(81-91) <b>B</b>		
(69-80) <b>C</b>		
(55-68) <b>D</b>		
(39-54) <b>E</b>		
(21-38) <b>F</b>		
(1-20) <b>G</b>		
Not energy efficient - higher running costs		
<b>England &amp; Wales</b>	EU Directive 2002/91/EC	

## DIRECTIONS

## CONTACT

Shore House Westbury Hill  
Westbury-on Trym, Bristol  
BS9 3AA

E: [elliott.sherwood@frontdoorlettings.co.uk](mailto:elliott.sherwood@frontdoorlettings.co.uk)

T: 0117 457 8577

[frontdoorlettings.co.uk](http://frontdoorlettings.co.uk)

