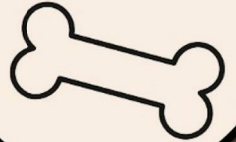




GARDEN



PETS
ALLOWED



**3 Bed
House - End Terrace
located in**



**FRONT
DOOR**
LETTINGS

**540 Bath Road
Saltford
BS31 3JL**



£2,000 Per month

**For Rent – 3 Bedroom Cottage Just 7
Minutes from Bath**

This charming 3-bedroom end-of-terrace cottage offers the perfect mix of countryside character and modern comfort — all just a short 7-minute drive from the centre of Bath.

The standout feature is the terraced garden: four tiers of beautifully landscaped space with stunning views across the countryside, a hot tub, a fully powered garden bar, and a shed for extra storage — ideal for relaxing, entertaining, or outdoor living. Secure off-street parking for 3–4 cars is included, providing both convenience and a safe area for children or pets to play.



**540 Bath Road
Saltford
BS31 3JL**



Inside, the home features exposed cottage-style wooden beams, a spacious living room with log burner, and a large open-plan kitchen-diner designed for modern living. Upstairs are three bedrooms and a modern family bathroom with over-bath shower.

With a bus stop opposite, easy access into Bath, and peaceful surroundings, this is a rare rental that combines convenience, charm, and lifestyle in one. Ideal for a family or young couple looking to make a house a home. Available for long-term rental.

Council Tax Band- C

EPC Band- D

Available From- 1st of August 2025



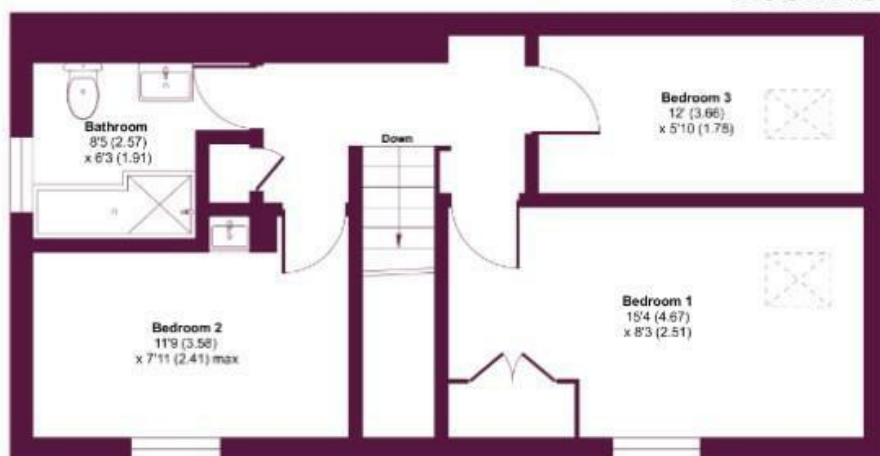
Bath Road, Saltford, Bristol, BS31

Approximate Area = 880 sq ft / 81.7 sq m

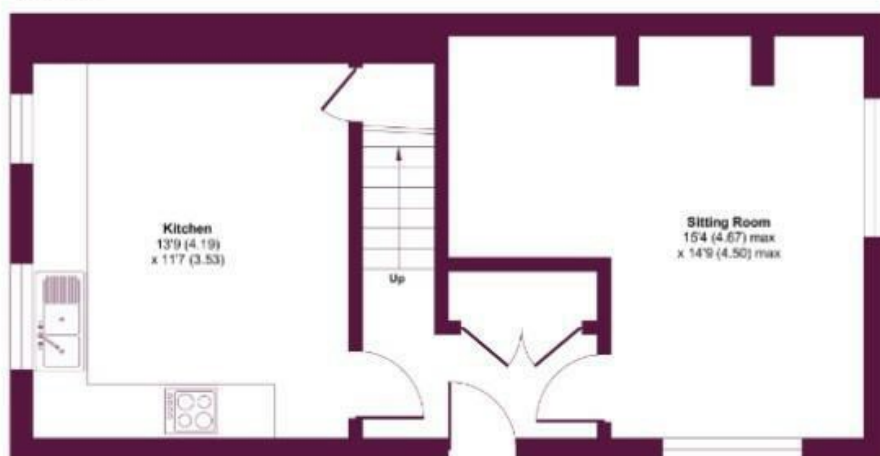
Outbuilding = 40 sq ft / 3.7 sq m

Total = 920 sq ft / 85.4 sq m

For identification only - Not to scale



FIRST FLOOR



GROUND FLOOR



OUTBUILDING



CONTACT

Shore House Westbury Hill
Westbury-on Trym, Bristol
BS9 3AA

E: elliott.sherwood@frontdoorlettings.co.uk

T: 0117 457 8577

frontdoorlettings.co.uk

