

**1 Bed
Room
located in**



Room 3, 886 Fishponds Road Fishponds BS16 3XB



1



1



0



£900 Per month

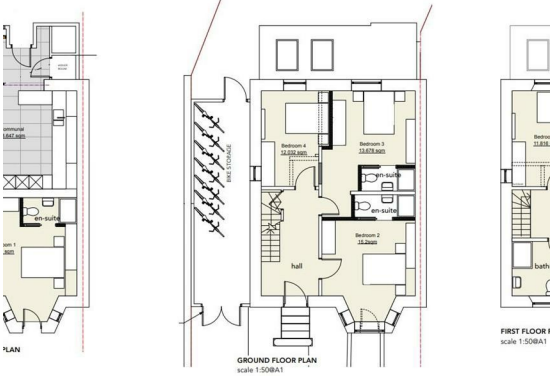
Be the first to call this beautiful, 7 bed, highly finished HMO your home. Having been fully refurbished, with brand new kitchen, bathrooms, carpet and painted throughout – this is house with great sized rooms, a large communal kitchen/dining area and storage in the garage.

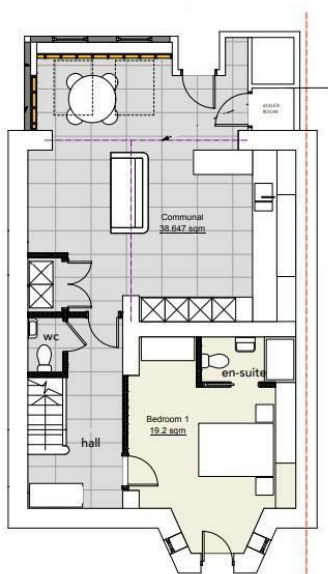
Located on the first floor at the back of the house with a view out onto the garden. This room is one of the larger in the house, coming with a double bed, wardrobe, chest of draws and a desk in the bay window area. The en-suite comes with a lovely, large shower finished off with stylish black taps.

With all bills included, and available now – rooms in this house are not to be missed! Conveniently located to bus stops taking you on the 47, 48 or 49 bus into the centre or towards Downend. And you're just a few minutes walk along to shops, cafes and pubs on Fishponds Road. With plenty of shops, supermarkets all on your doorstep this house is amazingly located.

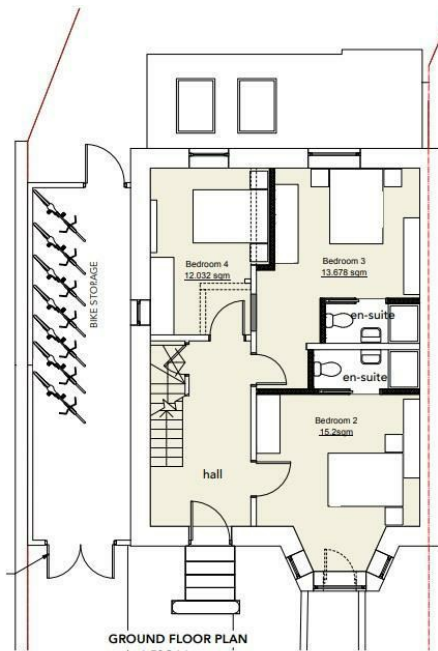
Please note the bed was still to be assembled when the photos were taken

- Professional HMO
- All Bills Included
- Available Now
- £900 per month
- £1038 Security Deposit

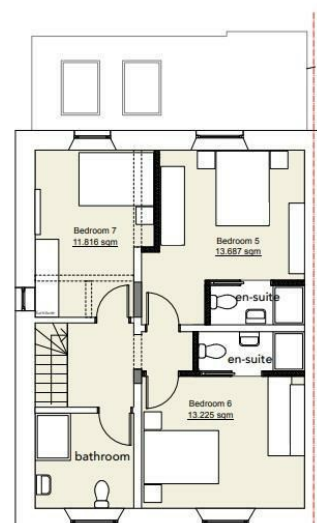




LOWER GROUND FLOOR PLAN
scale 1:50@A1



GROUND FLOOR PLAN
scale 1:50@A1



FIRST FLOOR PLAN
scale 1:50@A1

Energy Efficiency Rating		
	Current	Potential
Very energy efficient - lower running costs		
(92 plus) A		
(81-91) B		
(69-80) C		
(55-68) D		
(39-54) E		
(21-38) F		
(1-20) G		
Not energy efficient - higher running costs		
England & Wales	EU Directive 2002/91/EC	

DIRECTIONS

CONTACT

Shore House Westbury Hill
Westbury-on Trym, Bristol
BS9 3AA

E: elliott.sherwood@frontdoorlettings.co.uk

T: 0117 457 8577

frontdoorlettings.co.uk

