

**1 Bed
Room
located in**



Room 5, 886 Fishponds
Road
Fishponds
BS16 3XB



£850 Per month

Be the first to call this beautiful, 7 bed, highly finished HMO your home. Having been fully refurbished, with brand new kitchen, bathrooms, carpet and painted throughout – this is house with great sized rooms, a large communal kitchen/dining area and storage in the garage.

Located on the first floor, this room is a good size and with the high ceilings, makes it feel large and spacious. Coming with a double bed, wardrobe, chest of draws and can be furnished with a desk. Looking out onto the garden this room is quiet and located opposite the large bathroom.

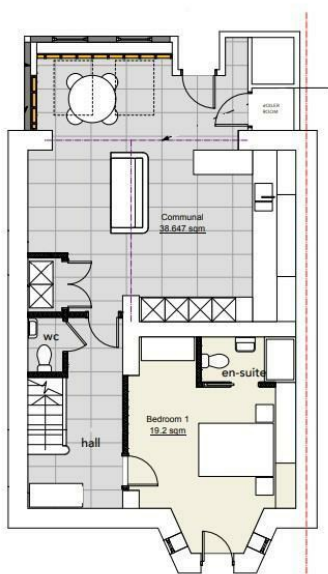
The house has a large bathroom upstairs and a single toilet on the ground floor by the kitchen.

With all bills included, and available now – rooms in this house are not to be missed! Conveniently located to bus stops taking you on the 47, 48 or 49 bus into the centre or towards Downend. And you're just a few minutes walk along to shops, cafes and pubs on Fishponds Road. With plenty of shops, supermarkets all on your doorstep this house is amazingly located.

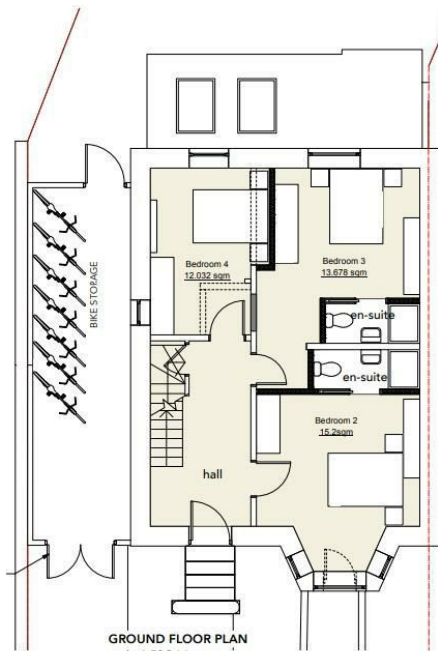
Please note the bed was still to be assembled when the photos were taken

- Professional HMO
- All Bills Included

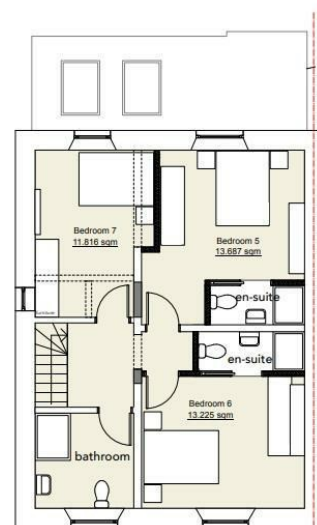




LOWER GROUND FLOOR PLAN
scale 1:50@A1



GROUND FLOOR PLAN
scale 1:50@A1



FIRST FLOOR PLAN
scale 1:50@A1

Energy Efficiency Rating		
	Current	Potential
Very energy efficient - lower running costs		
(92 plus) A		
(81-91) B		
(69-80) C		
(55-68) D		
(39-54) E		
(21-38) F		
(1-20) G		
Not energy efficient - higher running costs		
England & Wales	EU Directive 2002/91/EC	

DIRECTIONS

CONTACT

Shore House Westbury Hill
Westbury-on Trym, Bristol
BS9 3AA

E: elliott.sherwood@frontdoorlettings.co.uk

T: 0117 457 8577

frontdoorlettings.co.uk

