



**1 Bed
Room
located in**



Room 1, 886 Fishponds
Road
Fishponds
BS16 3XB



£900 Per month

ZERO DEPOSIT AVAILABLE
BRAND NEW ENSUITE ROOM IN A FULLY REFURBISHED 7
BED HMO

Be the first to call this beautifully finished home yours. Recently refurbished throughout with a brand new kitchen, bathrooms, fresh carpets and full redecoration – this property offers generous rooms, a spacious communal kitchen/dining area, and additional storage in the garage.

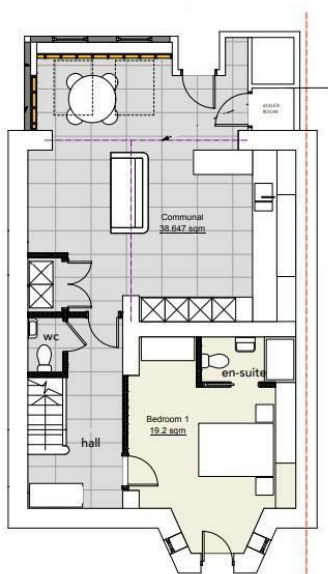
This ground floor ensuite room is one of the largest in the house, located close to the kitchen. It comes furnished with a double bed, wardrobe, chest of drawers, and a desk set in the bay window area. The ensuite features a large shower and sleek black fittings.

All bills are included, and the property is ready to move into now. Situated close to bus routes 47, 48 and 49 with easy access to Bristol city centre and Downend, and only minutes from shops, cafes and pubs on Fishponds Road – everything you need is on your doorstep.

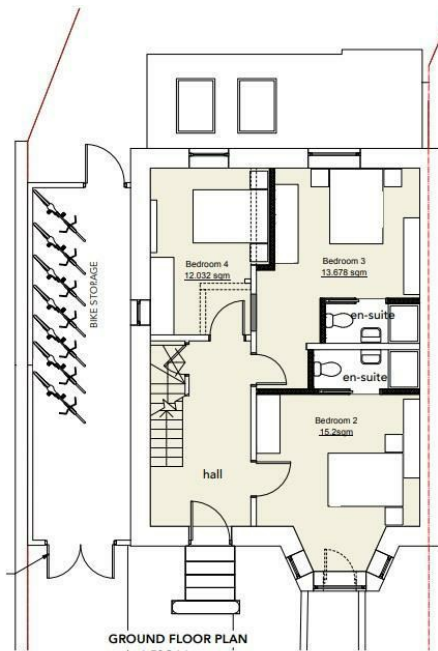
Please note the bed was awaiting assembly when photos were taken.

- Professional HMO
- All Bills Included
- Available Now
- £900 per month
- £0 Security Deposit

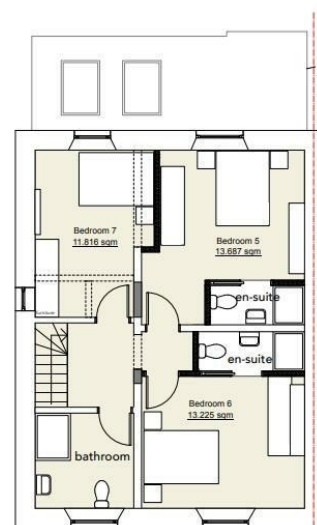




LOWER GROUND FLOOR PLAN
scale 1:50@A1



GROUND FLOOR PLAN
scale 1:50@A1



FIRST FLOOR PLAN
scale 1:50@A1

Energy Efficiency Rating		
	Current	Potential
Very energy efficient - lower running costs		
(92 plus) A		
(81-91) B		
(69-80) C		
(55-68) D		
(39-54) E		
(21-38) F		
(1-20) G		
Not energy efficient - higher running costs		
England & Wales	EU Directive 2002/91/EC	

DIRECTIONS

CONTACT

Shore House Westbury Hill
Westbury-on Trym, Bristol
BS9 3AA

E: elliott.sherwood@frontdoorlettings.co.uk

T: 0117 457 8577

frontdoorlettings.co.uk

