

**6 Bed  
House  
located in**



# 224 Fishponds Road

## Bristol

### BS5 6PX



6



3



1



D

£4,500

\*BRAND NEW\*

Newly Refurbished 6-Bedroom Student Maisonette – Prime  
Location Opposite Eastville Park

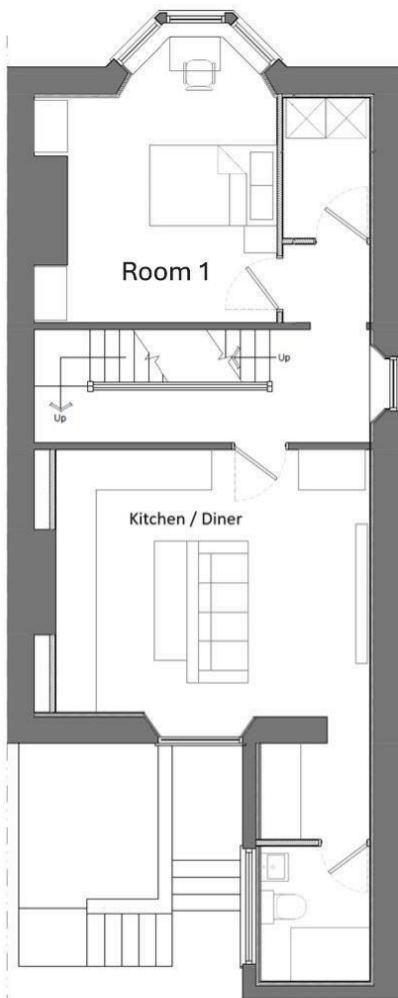
Student -be the first to enjoy this completely overhauled 6-bedroom maisonette on Fishponds Road, situated right across from Eastville Park.

Spanning three floors, this property provides a perfect balance of generous space and modern design, featuring six roomy bedrooms, a brand-new kitchen/diner complete with a 65-inch TV, two sleek bathrooms, an additional toilet, and a dedicated utility room for extra convenience.

Key Features:

- Six sizeable bedrooms – Ideal for comfortable student living.
- Brand-new kitchen/diner – Modern appliances plus a 65-inch TV for watching movies or big matches.
- Two modern bathrooms + extra toilet – Less waiting time in the mornings.
- Separate utility room – Handy for laundry and additional storage.
- Rear garden + nearby parks – Enjoy outdoor space right at your doorstep.
- Fortnightly cleaning service – Communal areas and bathrooms kept spotless.
- Excellent location – Close to shops, bus routes to the city centre,

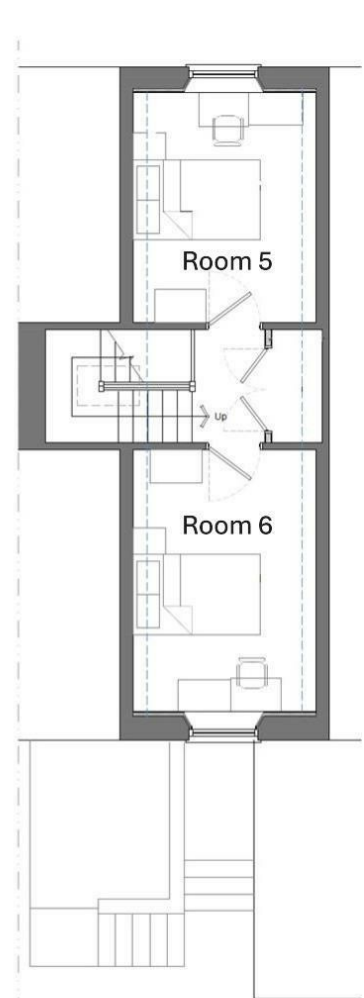




First Floor



Second Floor



Third Floor

Energy Efficiency Rating		
	Current	Potential
Very energy efficient - lower running costs		
(92 plus) A		
(81-91) B		
(69-80) C		
(55-68) D	58	
(39-54) E		
(21-38) F		
(1-20) G		
Not energy efficient - higher running costs		
England & Wales	EU Directive 2002/91/EC	

## DIRECTIONS

## CONTACT

Shore House Westbury Hill  
Westbury-on Trym, Bristol  
BS9 3AA

E: [elliott.sherwood@frontdoorlettings.co.uk](mailto:elliott.sherwood@frontdoorlettings.co.uk)

T: 0117 457 8577

[frontdoorlettings.co.uk](http://frontdoorlettings.co.uk)

