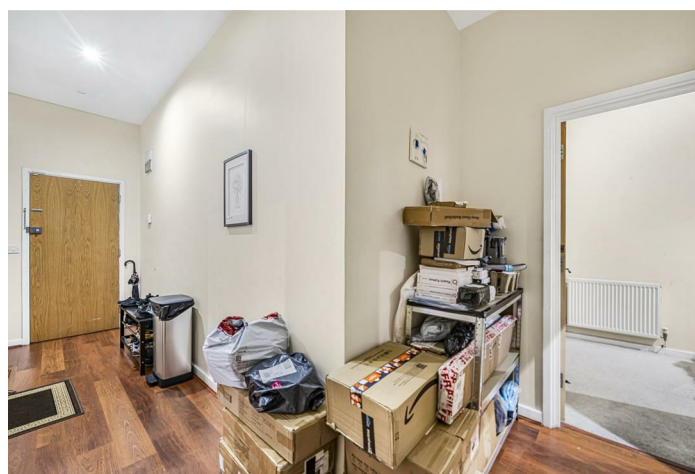


LEASEHOLD



Apartment (EPC Rating: C)

FLAT 1, 14 CAMBRIDGE ROAD, BARKING,  
IG11 8NZ  
Offers over

£290,000

Green Lane Residential

Your personal estate agents with over 50 years experience





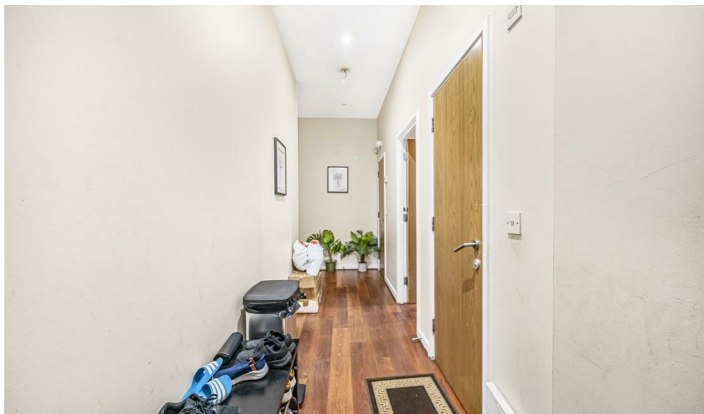
# 2 Bedroom Apartment located in Barking

Your award-winning local estate agents, Green Lane Residential, are delighted to present this larger-than-average two-bedroom apartment, arranged over an impressive 1,073 sq ft in the very heart of Barking, East London.

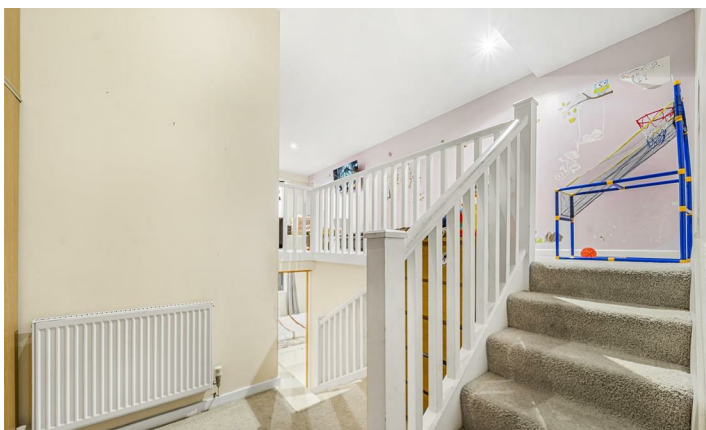
Designed with versatility in mind, the property boasts a striking galieried second reception area, an elevated space that can be partitioned to create a third bedroom - perfect for those considering a buy-to-let investment or requiring adaptable living.

A rare highlight of the home is the extensive private roof terrace, offering an exceptional outdoor area ideal for entertaining or unwinding above the city. The property further benefits from secure underground parking, adding valuable convenience and peace of mind.

Situated moments from Barking's bustling town centre and excellent transport links, this unique apartment blends space, flexibility, and prime location - an opportunity not to be missed.







Flat 1, Central House, Cambridge Road, IG11 8NZ

Approximate Gross Internal Area = 99.7 sq m / 1073 sq ft



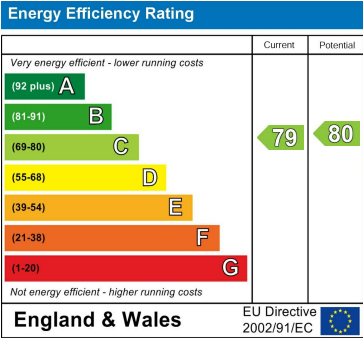
For Illustration Purposes Only - Not To Scale

This floor plan should be used as a general outline for guidance only and does not constitute in whole or in part an offer or contract. Any intending purchaser or lessee should satisfy themselves by inspection, enquiries and full survey as to the correctness of each statement. Any areas, measurements or distances quoted are approximate and should not be used to value a property or be the basis of any sale or let.

Council Tax Band

D

Energy Performance Graph



Call us on

02081293838

admin@greenlaneresidential.co.uk  
greenlaneresidential.co.uk

Agents Note: Whilst every care has been taken to prepare these particulars, they are for guidance purposes only. All measurements are approximate and are for general guidance purposes only and whilst every care has been taken to ensure their accuracy, they should not be relied upon and potential buyers are advised to recheck the measurements.

Green Lane Residential

Your personal estate agents with over 50 years experience