

FREEHOLD



House (EPC Rating:)

16 THIRD AVENUE, ROMFORD, RM6 5DB

Guide price

£500,000

Green Lane Residential

Your personal estate agents with over 50 years experience



3



2



1



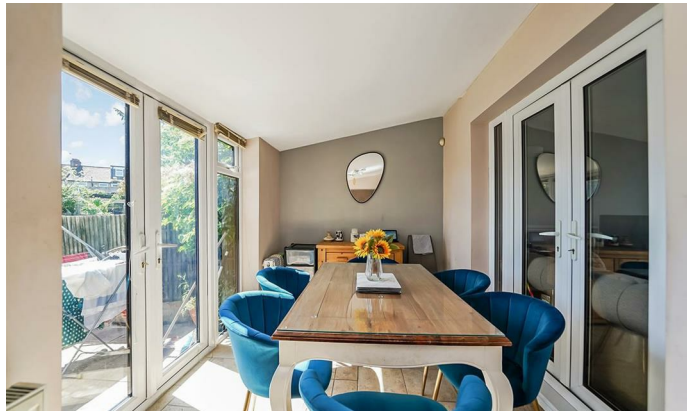
3 Bedroom House located in Romford

OPEN HOUSE SATURDAY 17TH MAY! CONTACT OUR SALES TEAM TO SCHEDULE YOUR VIEWING.

GUIDE PRICE £500,000 - £525,000. Green Lane Residential is delighted to present for sale this generously sized 3-bedroom end-of-terrace home, featuring extended living space and benefitting from a double garage at the rear.

Nestled in a desirable residential location, this well-presented 3-bedroom end-of-terrace home offers generous living space, modern features, and excellent versatility for families.

The property boasts a bright and welcoming through lounge, perfect for both relaxing and entertaining, which flows seamlessly into a thoughtfully extended kitchen and dining area—ideal for family meals or hosting guests. A convenient ground floor bathroom/utility room adds practicality and flexibility to the layout.



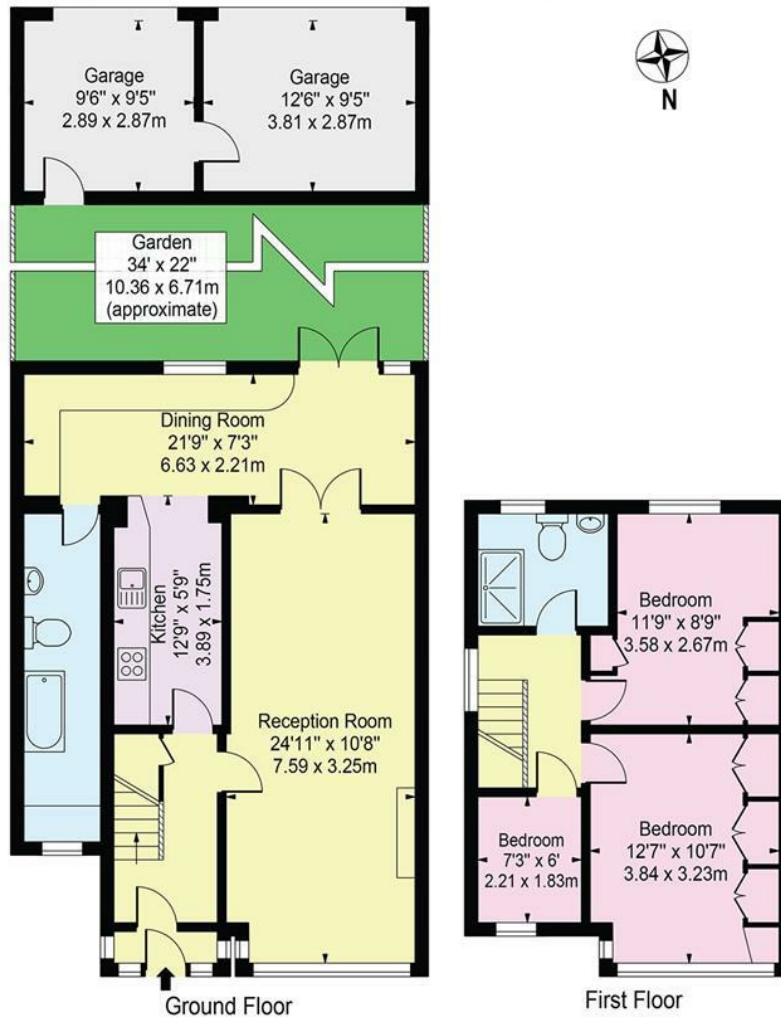
GREEN LANE RESIDENTIAL | 551 GREEN LANE, ILFORD, LONDON, IG3 9RJ



Third Avenue, RM6 5DB

Approx. Gross Internal Area 1077 Sq Ft - 100.06 Sq M
(Excluding Garage)

Approx. Gross Internal Area Of Garage 214 Sq Ft - 19.88 Sq M



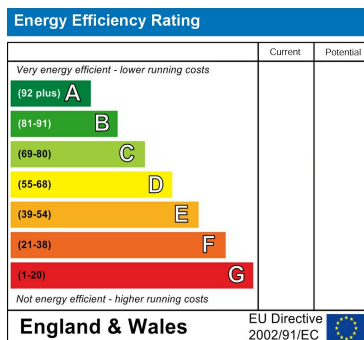
For Illustration Purposes Only - Not To Scale

This floor plan should be used as a general outline for guidance only and does not constitute in whole or in part an offer or contract. Any intending purchaser or lessee should satisfy themselves by inspection, searches, enquiries and full survey as to the correctness of each statement. Any areas, measurements or distances quoted are approximate and should not be used to value a property or be the basis of any sale or let.

Council Tax Band

D

Energy Performance Graph



Call us on

02081293838

admin@greenlaneresidential.co.uk
greenlaneresidential.co.uk

Agents Note: Whilst every care has been taken to prepare these particulars, they are for guidance purposes only. All measurements are approximate and are for general guidance purposes only and whilst every care has been taken to ensure their accuracy, they should not be relied upon and potential buyers are advised to recheck the measurements.

Green Lane Residential

Your personal estate agents with over 50 years experience