

FREEHOLD



House (EPC Rating: D)

10 FELBRIGGE ROAD, ILFORD, IG3 8DN

Offers over

£575,000

Green Lane Residential

Your personal estate agents with over 50 years experience



4



2



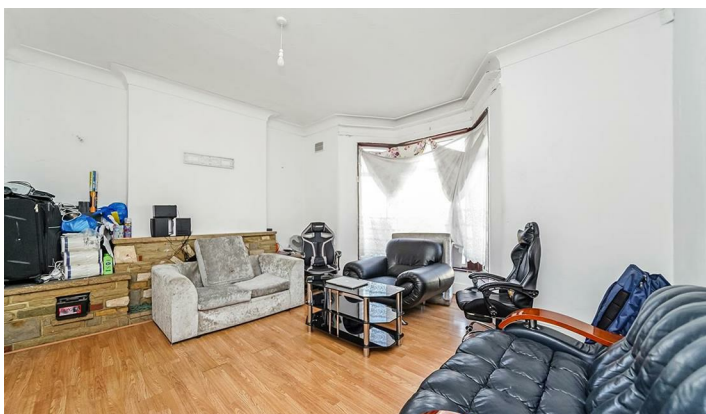
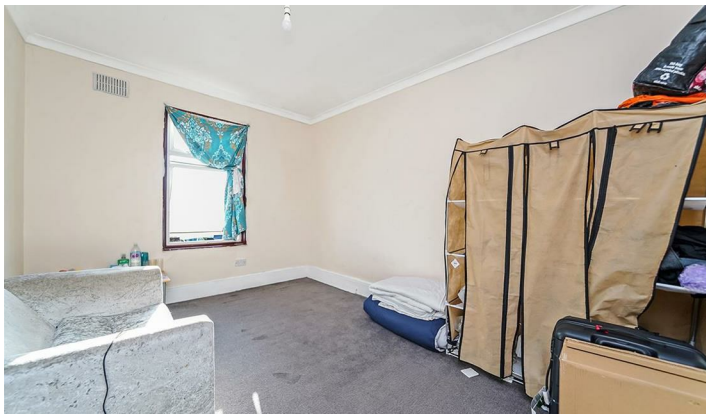
2

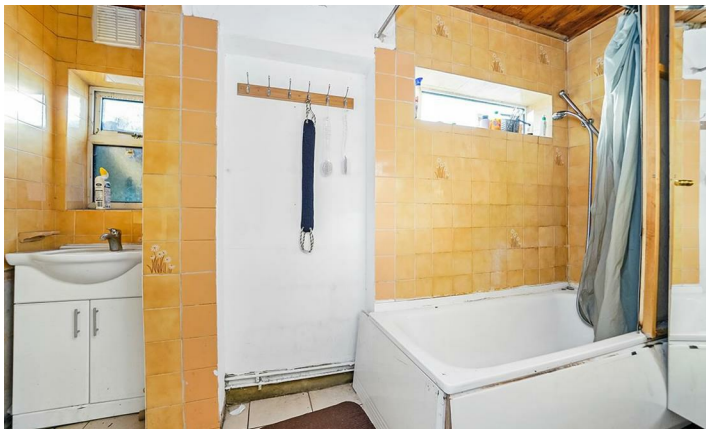


D

4 Bedroom House located in Ilford

Green Lane Residential is pleased to present this four-bedroom end-of-terrace family home, ideally situated just 0.2 miles (a short walk) from the Elizabeth Line at Seven Kings and 1.1 miles (on foot) from Goodmayes Park at Aberdour Road, Goodmayes. While the property requires updating throughout, it spans two floors with an area of approximately 1443 SqFt (134 SqMtrs) and offers significant potential for side, rear, and loft extensions.





Felbrigge Road,
Goodmayes, IG3 8DN

Approx. Gross Internal Area 1443 Sq Ft - 134.06 Sq M
(Excluding Garage & Store)

Approx. Gross Internal Area Of Garage 215 Sq Ft - 19.96 Sq M

Approx. Gross Internal Area Of Store 216 Sq Ft - 20.06 Sq M



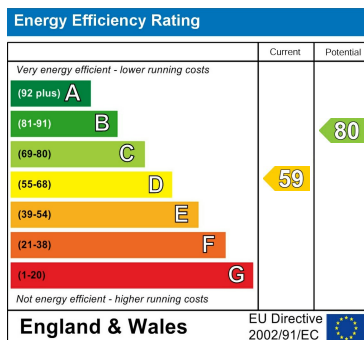
For Illustration Purposes Only - Not To Scale

This floor plan should be used as a general outline for guidance only and does not constitute in whole or in part an offer or contract.
Any intending purchaser or lessee should satisfy themselves by inspection, searches, enquiries and full survey as to the correctness of each statement.
Any areas, measurements or distances quoted are approximate and should not be used to value a property or be the basis of any sale or let.

Council Tax Band

E

Energy Performance Graph



Call us on

02081293838

admin@greenlaneresidential.co.uk

greenlaneresidential.co.uk

Agents Note: Whilst every care has been taken to prepare these particulars, they are for guidance purposes only. All measurements are approximate and are for general guidance purposes only and whilst every care has been taken to ensure their accuracy, they should not be relied upon and potential buyers are advised to recheck the measurements.

Green Lane Residential

Your personal estate agents with over 50 years experience