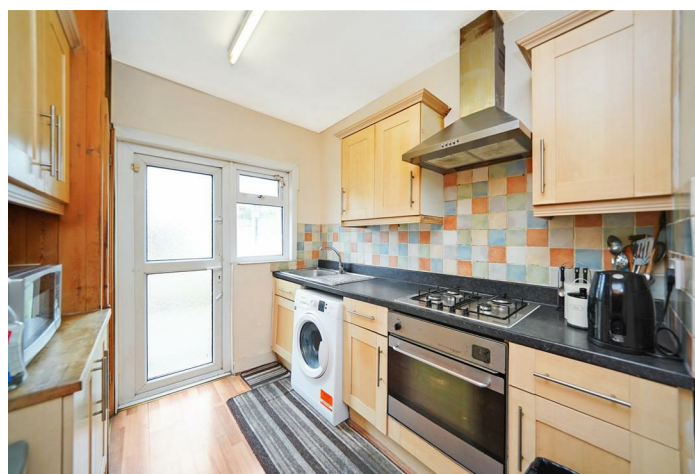


FREEHOLD



House (EPC Rating: C)

93 LYNDHURST GARDENS, BARKING, IG11  
9YA

Offers over

£500,000

Green Lane Residential

*Your personal estate agents with over 50 years experience*



5



2



2



C

# 5 Bedroom House located in Barking

Green Lane Residential are pleased to present for sale this spacious 5-bedroom loft extended family home that offers incredible potential for those looking to put their personal touch on a property with ample room to grow.

With its generous layout and extended living spaces, this home provides the perfect foundation for creating your dream space. Whether you're looking to update the interiors or modernise the design, the possibilities are endless in this charming and well-located home. Enjoy the vibrant community and close proximity to local amenities, while making this home your own with a refreshing renovation. Ideal for families seeking space, comfort, and the chance to personalize a true gem in a popular, thriving area.





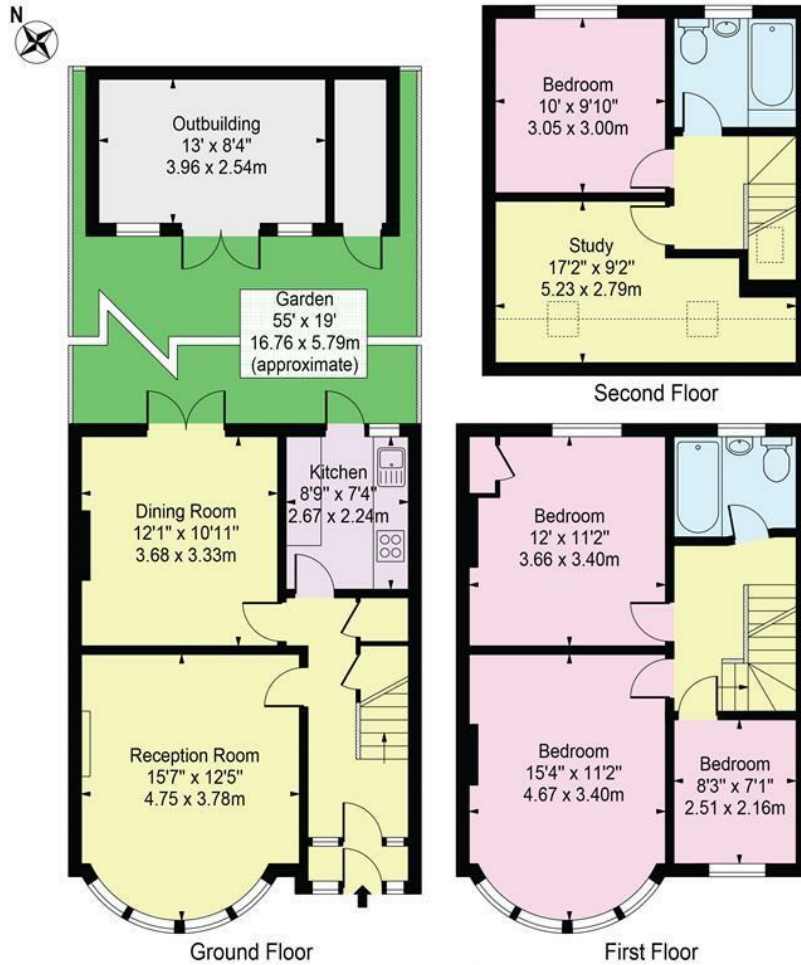


## Lyndhurst Gardens, IG11 9YA

Approx. Gross Internal Area 1313 Sq Ft - 121.98 Sq M  
(Including Restricted Height Area & Excluding Outbuilding)

Approx. Gross Internal Area 1270 Sq Ft - 117.99 Sq M  
(Excluding Outbuilding & Restricted Height Area)

Approx. Gross Internal Area Of Outbuilding 136 Sq Ft - 12.63 Sq M



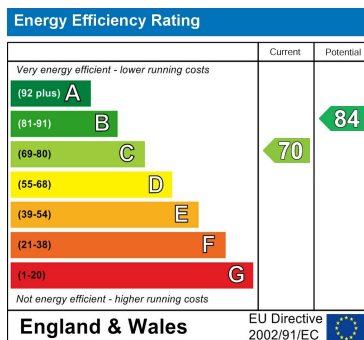
For Illustration Purposes Only - Not To Scale

This floor plan should be used as a general outline for guidance only and does not constitute in whole or in part an offer or contract. Any intending purchaser or lessee should satisfy themselves by inspection, searches, enquiries and full survey as to the correctness of each statement. Any areas, measurements or distances quoted are approximate and should not be used to value a property or be the basis of any sale or let.

Council Tax Band

**D**

Energy Performance Graph



Call us on

**02081293838**

[admin@greenlaneresidential.co.uk](mailto:admin@greenlaneresidential.co.uk)

[greenlaneresidential.co.uk](http://greenlaneresidential.co.uk)

Agents Note: Whilst every care has been taken to prepare these particulars, they are for guidance purposes only. All measurements are approximate and are for general guidance purposes only and whilst every care has been taken to ensure their accuracy, they should not be relied upon and potential buyers are advised to recheck the measurements.

# Green Lane Residential

Your personal estate agents with over 50 years experience