

FREEHOLD



House - Terraced (EPC Rating: )

36 FIELDWAY, DAGENHAM, RM8 2BE

£400,000

Green Lane Residential

Your personal estate agents with over 50 years experience



3



|



|





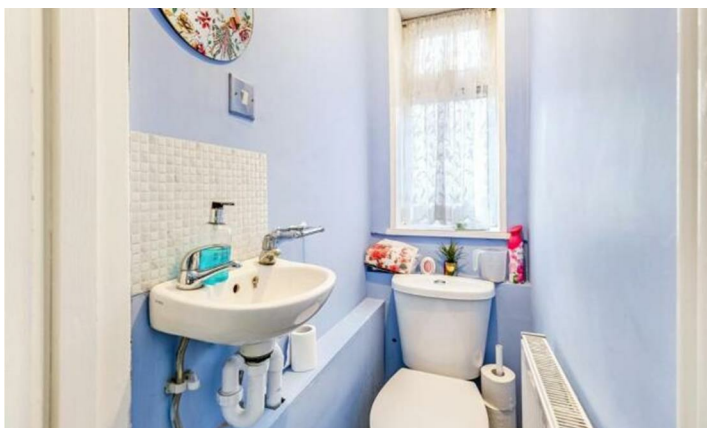
# 3 Bedroom House - Terraced located in Dagenham

Green Lane Residential is pleased to offer for sale this three-bedroom family home, spanning approximately 935 SqFt.

This spacious property provides comfortable living throughout, featuring off-street parking for one car, with potential to expand for two. The large south-facing rear garden offers the possibility of a generous ground-floor extension while still preserving ample outdoor space.

Situated just 1.1 miles from Becontree Underground Station and 1.3 miles from both Goodmayes and Chadwell Heath Crossrail Stations, the location is highly convenient. For outdoor enthusiasts, Goodmayes Park complete with green spaces, a lake, and a children's play area is only 0.6 miles away, just a short walk from the property.

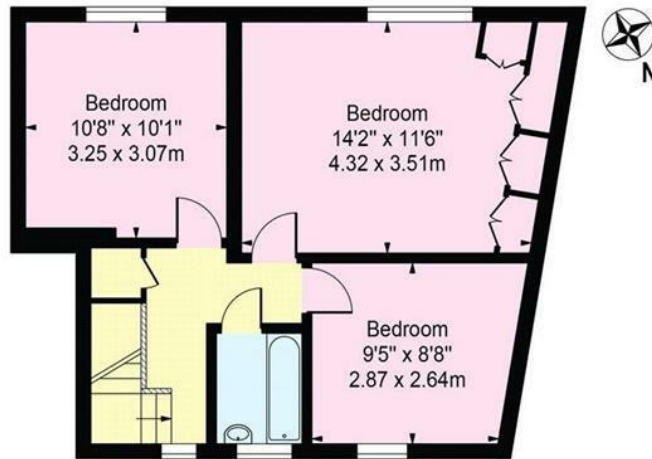




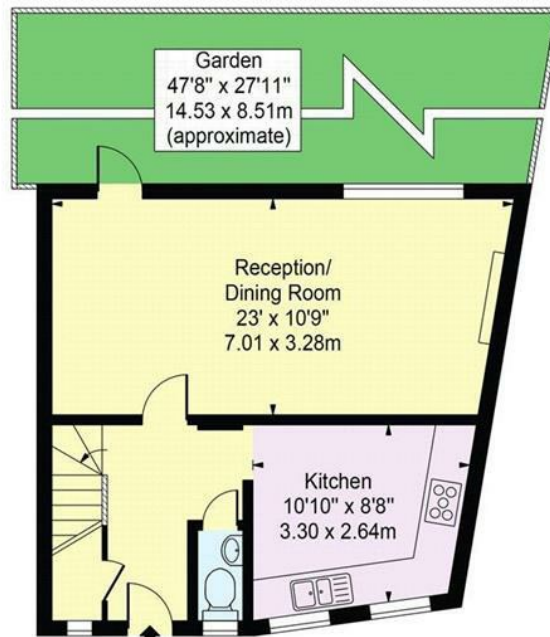


# Fieldway, RM8 2BE

Approx. Gross Internal Area 935 Sq Ft - 86.86 Sq M



First Floor



Ground Floor

For Illustration Purposes Only - Not To Scale

This floor plan should be used as a general outline for guidance only and does not constitute in whole or in part an offer or contract. Any intending purchaser or lessee should satisfy themselves by inspection, searches, enquiries and full survey as to the correctness of each statement. Any areas, measurements or distances quoted are approximate and should not be used to value a property or be the basis of any sale or let.

Council Tax Band

**C**

Energy Performance Graph

Energy Efficiency Rating		
	Current	Potential
Very energy efficient - lower running costs		
(92 plus) <b>A</b>		
(81-91) <b>B</b>		
(69-80) <b>C</b>		
(55-68) <b>D</b>		
(39-54) <b>E</b>		
(21-38) <b>F</b>		
(1-20) <b>G</b>		
Not energy efficient - higher running costs		
<b>England &amp; Wales</b>	EU Directive 2002/91/EC	

Call us on

**02081293838**

**admin@greenlaneresidential.co.uk**

**greenlaneresidential.co.uk**

Agents Note: Whilst every care has been taken to prepare these particulars, they are for guidance purposes only. All measurements are approximate and are for general guidance purposes only and whilst every care has been taken to ensure their accuracy, they should not be relied upon and potential buyers are advised to recheck the measurements.

## Green Lane Residential

*Your personal estate agents with over 50 years experience*