

FREEHOLD



House - Mid Terrace

8 STANHOPE GARDENS, ILFORD, IGI 3LQ

Offers in excess of

£650,000

FEATURES

- Offers Over £650,000
- Four bedrooms - Two bathrooms - Three Receptions
- Arranged over two floors extending to 1555 SqFt (144 SqMtrs)
- Original brick facade
- Off street parking
- Quiet tree lined residential road



Green Lane Residential

Your personal estate agents with over 50 years experience

4 Bedroom House - Mid Terrace located in Ilford

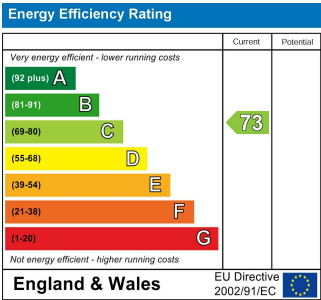
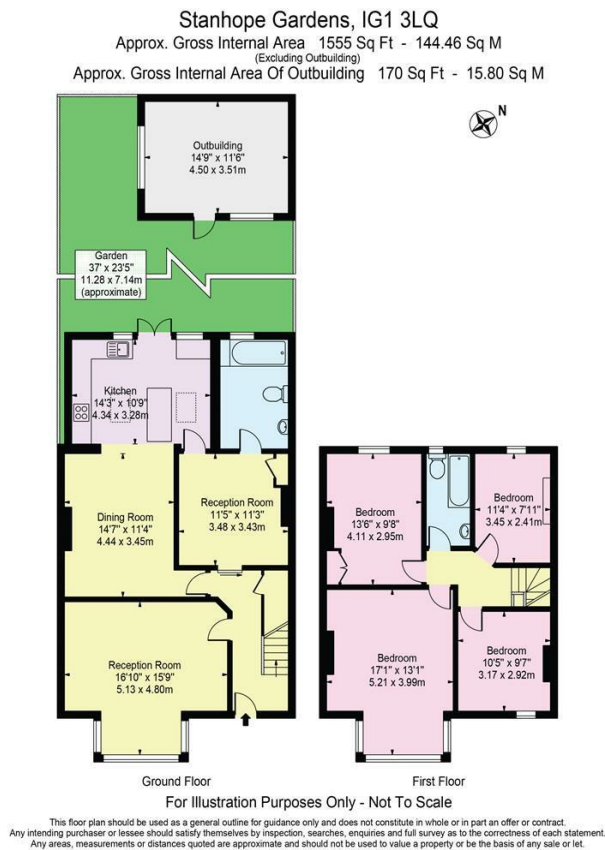
Green Lane Residential is excited to present this four-bedroom terraced property to the market, lovingly cared for by our client over the past 16 years. More than just a house, it has been a happy family home and is now available for sale. Spread across two floors and extending to approximately 1555 SqFt (144 SqM), the property is in excellent condition, ready for you to move in and begin creating wonderful memories.

Call us on

02081293838

admin@greenlaneresidential.co.uk
greenlaneresidential.co.uk

Council Tax Band



Agents Note: Whilst every care has been taken to prepare these particulars, they are for guidance purposes only. All measurements are approximate and are for general guidance purposes only and whilst every care has been taken to ensure their accuracy, they should not be relied upon and potential buyers are advised to recheck the measurements.

Green Lane Residential

Your personal estate agents with over 50 years experience