



Victoria Bolt
estate agents POWERED BY **exp** UK

Amados Drive, Plympton

Guide Price £270,000

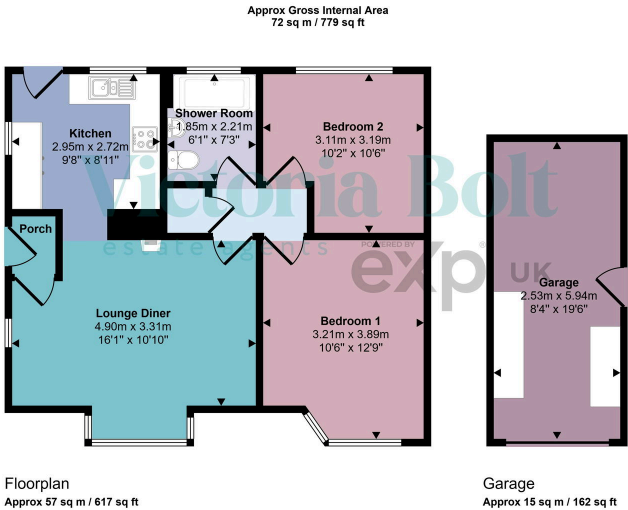
🛏 2 🚿 1 🛋 1



- Two-bedroom semi-detached bungalow
- Landscaped front garden
- Driveway with direct access to garage
- Bright and inviting living space
- Modern kitchen with garden access
- Large shower room
- Landscaped tiered rear garden
- Elevated top tier with panoramic views
- Large patio area for entertaining
- Located in a desirable Plympton neighbourhood



Well-presented 2-bedroom semi-detached bungalow in Plympton with a landscaped tiered garden, garage, driveway, and stunning elevated views. Perfect for low-maintenance living in a sought-after location.



Score	Energy rating	Current	Potential
92+	A		
81-91	B		87 B
69-80	C		
55-68	D	63 D	
39-54	E		
21-38	F		
1-20	G		