



Victoria Bolt
estate agents POWERED BY **exp** UK

Mallet Road, Ivybridge

Guide Price £250,000

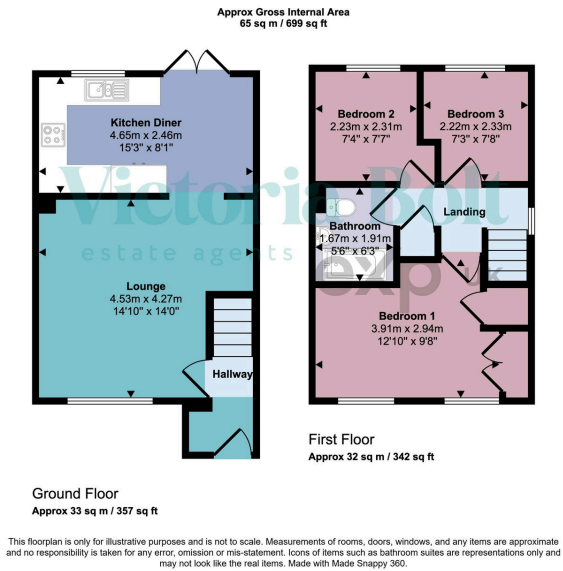
3 1 1



- Three-bedroom semi-detached house
- Spacious lounge filled with natural light
- Private driveway with space for two vehicles
- Landscaped rear garden with raised decking, lawn, and patio
- Peaceful residential location in Ivybridge
- Contemporary décor and modern finishes throughout
- Stylish open-plan kitchen/diner with garden access
- Gated side access to the rear garden
- Modern family bathroom
- Move-in ready condition – perfect for families or first-time buyers



A beautifully modernised three-bedroom semi-detached home in a peaceful Ivybridge location. Boasting a bright and stylish interior, a private driveway for two cars, and a landscaped rear garden with raised decking, lawn, and patio. Ideal for families or first-time buyers looking for turn-key living.



Score	Energy rating	Current	Potential
92+	A		
81-91	B		87 B
69-80	C	71 C	
55-68	D		
39-54	E		
21-38	F		
1-20	G		