



**Victoria Bolt**  
estate agents POWERED BY **exp** UK



# Harston Road, Ivybridge

Guide Price £290,000

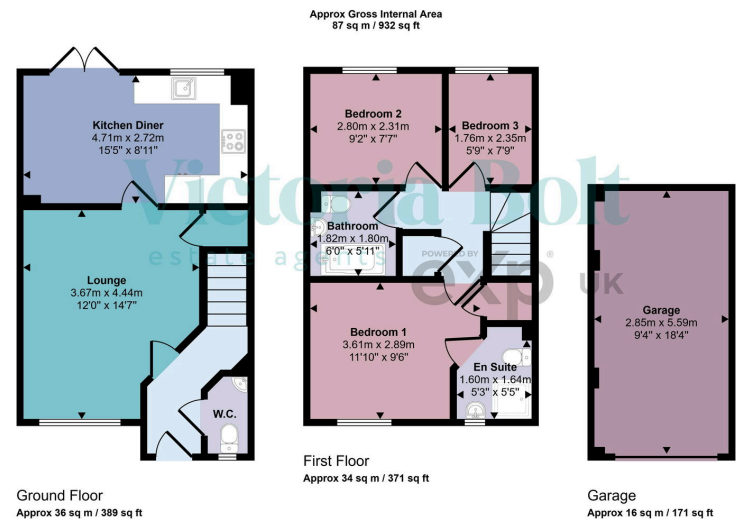
3 3 1





- Three-bedroom semi-detached home
- Bright kitchen/diner with garden access
- Principal bedroom with en suite shower room
- Detached garage to the front
- Modern layout with natural light throughout
- Located on a spacious corner plot
- Generous lounge and downstairs W.C.
- Family bathroom and two additional bedrooms
- Garden mainly to the side with excellent landscaping potential
- Quiet residential area in sought-after Ivybridge





This floorplan is only for illustrative purposes and is not to scale. Measurements of rooms, doors, windows, and any items are approximate and no responsibility is taken for any error, omission or mis-statement. Icons of items such as bathroom suites are representations only and may not look like the real items. Made with Made Snappy 360.

A well-presented 3-bedroom semi-detached home on a spacious corner plot in Ivybridge. Featuring a modern kitchen/diner, lounge, en suite to the main bedroom, and a detached garage. The corner plot garden offers fantastic potential to be landscaped into a standout outdoor space—ideal for families or buyers seeking a home with room to grow.

Score	Energy rating	Current	Potential
92+	A		97 A
81-91	B	84 B	
69-80	C		
55-68	D		
39-54	E		
21-38	F		
1-20	G		