



**Victoria Bolt**  
estate agents POWERED BY **exp** UK



## Killerton Lane, Plymstock

Guide Price £260,000

3 3 1

- Three-bedroom end of terrace house
- Contemporary fitted kitchen
- Two further well-proportioned bedrooms
- Modern, well-maintained interiors throughout
- Allocated off-street parking space
- Bright and spacious open-plan lounge/diner
- Master bedroom with en suite shower room
- Stylish family bathroom and separate downstairs WC
- Generous rear garden with patio, lawn and back gate
- Located in a desirable Plymstock area close to schools, shops, and transport links

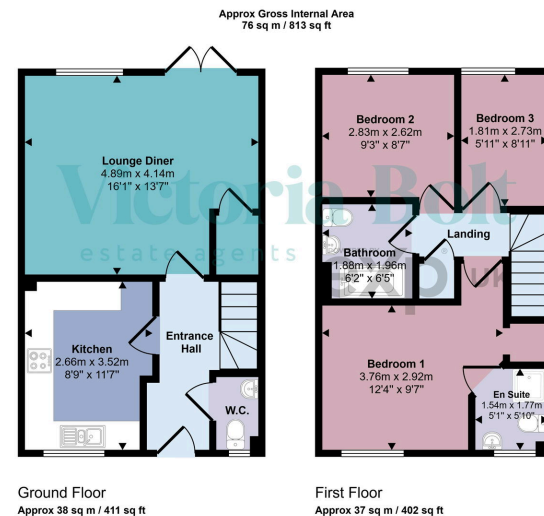


A stylish and modern three-bedroom end of terrace home in the popular Saltram Meadows development in Plymstock. Offering bright interiors, a private rear garden with patio, an en suite to the main bedroom, and allocated parking, this is a perfect home for families or professionals.









This floorplan is only for illustrative purposes and is not to scale. Measurements of rooms, doors, windows, and any items are approximate and no responsibility is taken for any error, omission or mis-statement. Icons of items such as bathroom suites are representations only and may not look like the real items. Made with Made Snappy 360.

