





## Trematon Drive, Ivybridge

Guide Price £250,000

🛏 2 🚗 1 🛋 1

- Semi detached house in Ivybridge
- Spacious lounge
- Conservatory currently used as a dining area and study
- Family bathroom
- Lapsed planning for an extension over the garage
- Garage with driveway parking for 3 cars
- Kitchen/breakfast room
- Two double bedrooms
- Low maintenance rear garden
- Level walk to Ivybridge town centre and close to the train station

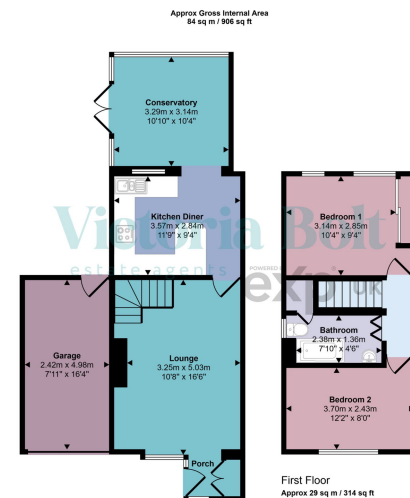


Located in a popular residential area of Ivybridge, this well-presented two-bedroom semi-detached home offers comfortable and versatile living. The property features a spacious lounge, a good size kitchen/breakfast room, and a bright conservatory overlooking the rear garden – perfect for entertaining or relaxing. Upstairs, you'll find two generously sized double bedrooms and a family bathroom. Outside, there's a garage and driveway parking for up to three vehicles. Ideal for first-time buyers, downsizers or investors. Early viewing recommended.









This floorplan is only for illustrative purposes and is not to scale. Measurements of rooms, doors, windows, and any items are approximate and no responsibility is taken for any error, omission or mis-statement. Icons of items such as bathroom suites are representations only and may not look like the real items. Made with Made Snappy 360.



Score	Energy rating	Current	Potential
92+	A		
81-91	B		
69-80	C		80 C
55-68	D	65 D	
39-54	E		
21-38	F		
1-20	G		