





## Savery Close, Ivybridge

Guide Price £300,000

3 1 1

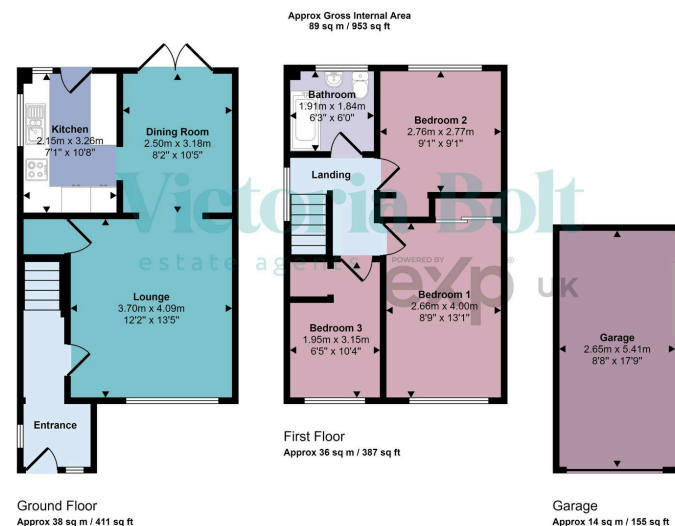




- Three-bedroom semi-detached house
- Well-appointed kitchen
- Family bathroom on the first floor
- Large driveway with double wooden gates
- Paved, low-maintenance rear garden ideal for entertaining
- Spacious lounge and separate dining room
- Two double bedrooms and one single bedroom
- Beautifully landscaped front garden
- Detached garage with side access
- Quiet cul-de-sac location in Ivybridge







This floorplan is only for illustrative purposes and is not to scale. Measurements of rooms, doors, windows, and any items are approximate and no responsibility is taken for any error, omission or mis-statement. Icons of items such as bathroom suites are representations only and may not look like the real items. Made with Made Snappy 360.

A well-presented three-bedroom semi-detached home tucked away in a quiet cul-de-sac in Ivybridge. With a landscaped front garden, ample parking, garage, and a low-maintenance rear garden, this property is ideal for families or first-time buyers. Conveniently located near local amenities, schools, Dartmoor National Park, and excellent transport links.

