



Victoria Bolt
estate agents POWERED BY **exp** UK

Sutton Harbour, Plymouth

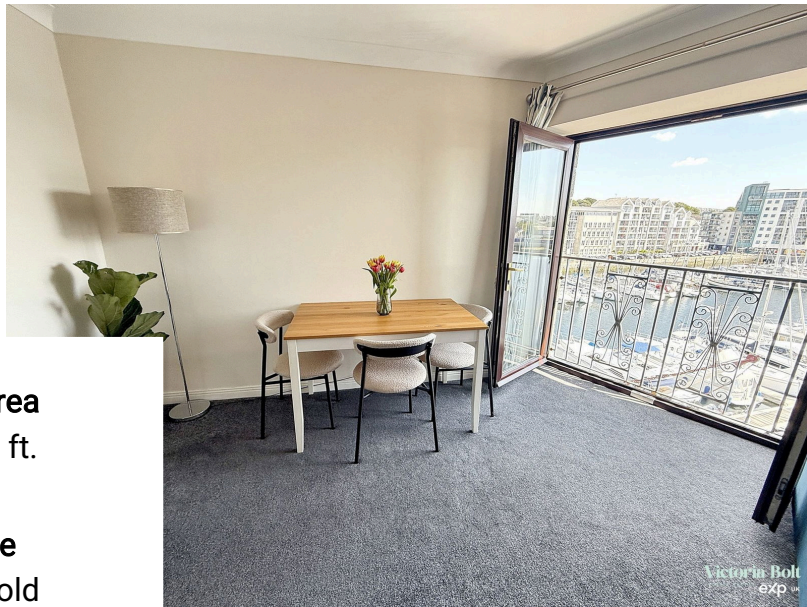
Guide Price £320,000

2 1



This well-presented forth floor two-bedroom apartment in Dolphin House, Sutton Wharf, boasts spacious interiors, a Juliet balcony with stunning marina views, and the convenience of secure underground parking. Ideally located opposite Sutton Harbour, it offers vibrant waterfront living just moments from Plymouth's city centre.



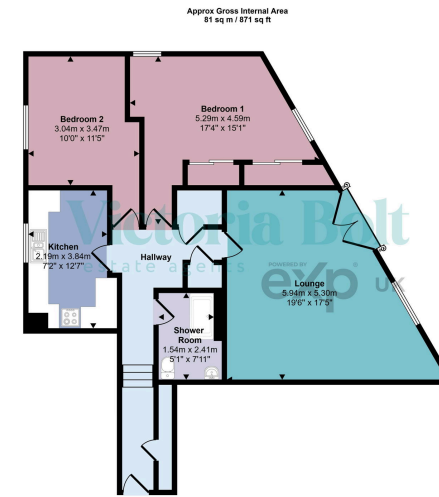


Floor Area
871 sq. ft.

Tenure
Leasehold

Service Charge
£2400 per annum

Ground Rent
£ per annum



Floorplan

This floorplan is only for illustrative purposes and is not to scale. Measurements of rooms, doors, windows, and any items are approximate and no responsibility is taken for any error, omission or mis-statement. Icons of items such as bathroom suites are representations only and may not look like the real items. Made with Made Snappy 360.

Energy Efficiency Rating

	Current	Potential
Very energy efficient - lower running costs		
(92 plus) A		
(81-91) B		
(69-80) C		79
(55-68) D	62	
(39-54) E		
(21-38) F		
(1-20) G		
Not energy efficient - higher running costs		
England & Wales		EU Directive 2002/91/EC