



Victoria Bolt
estate agents POWERED BY **exp** UK

Carina Place, Sherford

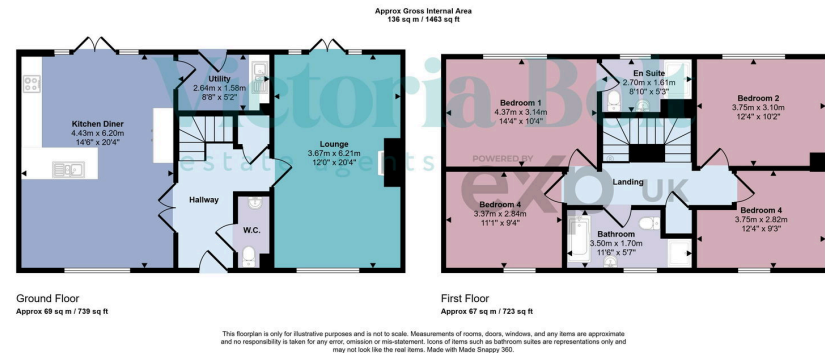
Guide Price £450,000

🛏 4 🚿 2 🛋 1



- Four bedroom detached home
- Large lounge measuring over 20 feet in length and a woodburner
- Downstairs W.C.
- Landscaped rear garden with L-shaped patio and wooden pergola
- Single garage located behind the garden for parking or storage
- Generous open-plan kitchen/diner with modern fittings
- Separate utility room for added convenience
- Stylish family bathroom with bathtub & separate shower
- Lush lawn ideal for children and outdoor enjoyment
- Electric power is connected to the garage & an EV charger





ELECTRIC IN THE GARAGE This beautifully presented four-bedroom detached home is located in a peaceful area of Sherford. Built in 2018 and pristine condition throughout, it offers a spacious lounge with a woodburner, a stunning open-plan kitchen/diner, a separate utility room, and a downstairs W.C. Upstairs features four well-sized bedrooms, including a master with en suite, and a family bathroom. The rear garden boasts a large L-shaped patio with a wooden pergola and a lawn, perfect for outdoor living. A single garage is located at the back of the garden with parking in front, making this an ideal family home in a sought-after location.

