



Victoria Bolt
estate agents POWERED BY **exp** UK

Pegasus Place, Sherford

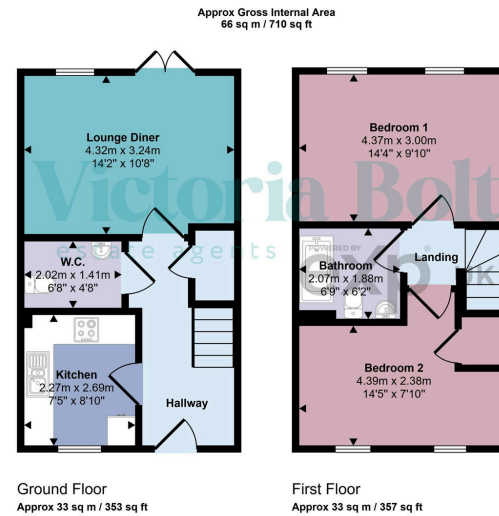
Guide Price £240,000

🛏 2 🚿 2 🛋 1



- End of terrace, two spacious double bedrooms
- Bright and airy lounge/diner
- Contemporary family bathroom
- Useful garden shed and side access gate to the front
- End of terrace house
- Modern kitchen with integrated appliances
- Downstairs WC for added convenience
- Enclosed rear garden with patio and lawn
- Nearby allocated parking
- No onward chain





This floorplan is only for illustrative purposes and is not to scale. Measurements of rooms, doors, windows, and any items are approximate and no responsibility is taken for any error, omission or mis-statement. Icons of items such as bathroom suites are representations only and may not look like the real items. Made with Made Snappy 360.

This modern two-bedroom end of terrace home is situated in Sherford, featuring a stylish kitchen with integrated appliances, downstairs WC, bright lounge/diner, two double bedrooms, and a family bathroom. Includes a landscaped rear garden with patio, shed, and side access, plus nearby parking. Ideal for first-time buyers or downsizers.

