





# Longwood Close, Plympton

Guide Price £290,000

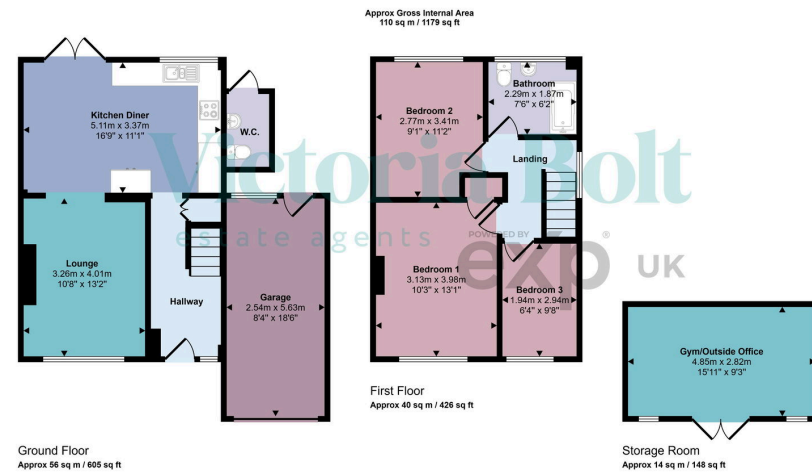
3 2 1





- Semi detached house in Plympton
- Bright lounge opening into the kitchen/diner
- Three bedrooms
- Outside WC
- Beautiful views towards Dartmoor
- Well presented throughout
- Kitchen/diner with integrated appliances
- Modern bathroom
- Low maintenance rear garden, with an area currently overgrown that could be incorporated into the parking
- Garaged driveway parking





This immaculate 3-bedroom semi-detached home is tucked away in a quiet cul-de-sac in Plympton and offers stylish, comfortable living throughout. There is a modern kitchen/diner and a bright, welcoming lounge. Upstairs, the accommodation offers two spacious double bedrooms, a single bedroom, and a contemporary bathroom. Outside, there's a driveway and garage for convenient parking, plus a long rear garden. A versatile wooden outbuilding is currently used as a gym, but would also make a great office or studio. There's even an outdoor toilet for added convenience.