



**Victoria Bolt**  
estate agents POWERED BY **exp** UK



# Boringdon Villas, Plympton

Guide Price £520,000

🛏 6 🚿 6 🚿 2

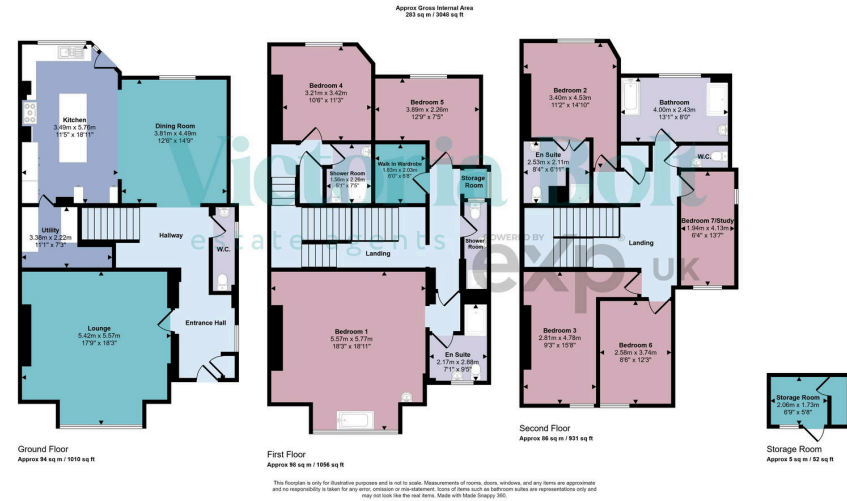




- Stunning six/seven bedrooms semi-detached home
- Expansive lounge
- Multiple bathrooms – Including two en-suites, a family bathroom, and two shower rooms
- Seventh bedroom currently used as a study
- Landscaped split-level rear garden
- Over 3,000 sq ft of internal living space
- Large kitchen/diner with island
- Walk-In wardrobe on the first floor
- Utility room and guest WC
- Located in a sought-after area with excellent family appeal







This spacious six-bedroom semi-detached home in Boringdon Villas, Plympton, offers over 3,000 sq ft of versatile living across three floors. It features a large kitchen with dining space, a generous lounge, multiple bathrooms, including en-suite facilities, and a walk-in wardrobe. The split-level rear garden contains a roofed pergola with artificial grass, a large decked entertaining area, and a second elevated deck with a storage shed. Set in a desirable location, with space for six cars, this property is ideal for large families or multi-generational living.

