



**Victoria Bolt**  
estate agents POWERED BY **exp** UK

## Western Drive, Plymouth

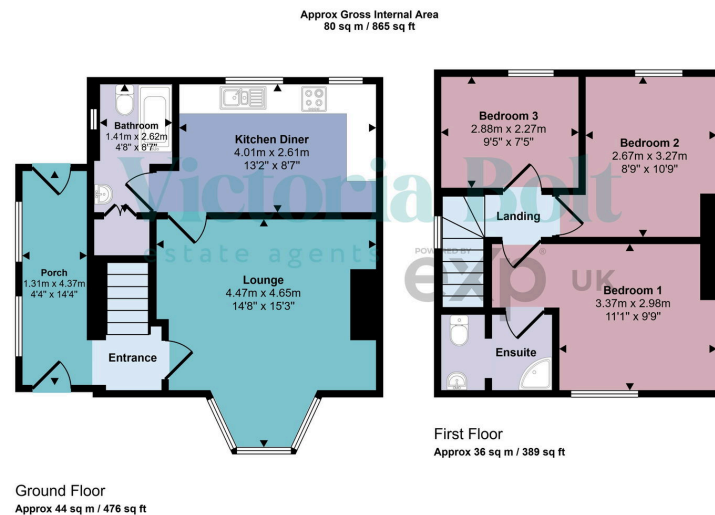
Offers Over £220,000

3 1 1



- Semi-detached home in a popular residential area
- Spacious lounge with bay window
- Downstairs bathroom for added convenience
- Rear garden with large decking area and pergola
- Ideal layout for families or first-time buyers
- Three well-proportioned bedrooms, including a main bedroom with en-suite
- Modern kitchen diner
- Low-maintenance front garden
- Central lawn and additional patio area at the rear of the garden
- Close to schools, local amenities, and transport links





This floorplan is only for illustrative purposes and is not to scale. Measurements of rooms, doors, windows, and any items are approximate and no responsibility is taken for any error, omission or mis-statement. Icons of items such as bathroom suites are representations only and may not look like the real items. Made with Made Snappy 360.

A well-presented three-bedroom semi-detached home in a popular Plymouth location, featuring a spacious lounge, modern kitchen/diner, and main bedroom with en-suite. The property offers a low-maintenance front garden and a beautifully arranged rear garden with decking, pergola, lawn, and patio area. Ideally suited for families or first-time buyers, and conveniently located near schools, amenities, and transport links.

