




Sarum Close, Plymouth

Guide Price £450,000

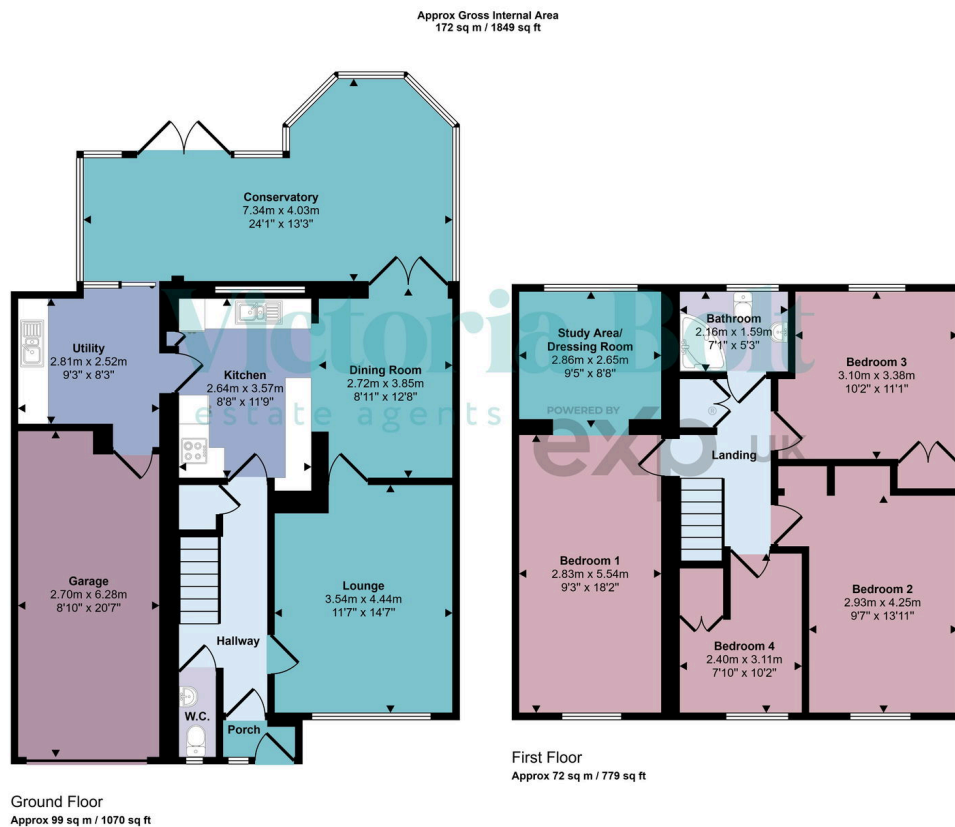
 4  1  2



Located in the desirable Hartley area of Plymouth, this spacious 4-bedroom detached home in Sarum Close offers fantastic potential and a large, private rear garden. Featuring a conservatory, two reception rooms, utility room, garage, and driveway, the property is currently vacant and ready to be transformed into your dream home. Set in a quiet cul-de-sac close to excellent schools, shops, and Central Park, it's ideal for families seeking space and a great location.

Key Features

- Four bedroom detached house (1849 sq ft)
- Spacious conservatory
- Downstairs WC
- Private driveway & integral garage
- Located in a peaceful cul-de-sac with strong community feel
- Two reception rooms
- Utility room
- Large rear garden
- Currently vacant and ready for personal renovation
- Close to schools, shops & Central Park



This floorplan is only for illustrative purposes and is not to scale. Measurements of rooms, doors, windows, and any items are approximate and no responsibility is taken for any error, omission or mis-statement. Icons of items such as bathroom suites are representations only and may not look like the real items. Made with Made Snappy 360.